

Community Vulnerability to Landslides in Bangladesh

BAYES AHMED

Institute for Risk and Disaster Reduction
Department of Earth Sciences
University College London (UCL)
Gower Street, London WC1E 6BT
United Kingdom (UK)

This thesis is submitted for the degree of Doctor of Philosophy (PhD)
at University College London (UCL)



September 2017

Declaration

I, **Bayes Ahmed** confirm that the work presented in this thesis is my own. Where information has been derived from other sources, I confirm that this has been indicated in the thesis.

Total Word Count = **98,557**

Total Word Count (without references and appendices) = **88,475**

Signature: _____

BAYES AHMED

Date: **11 September 2017**

Abstract

Landslides are a common hazard in the Chittagong Hill Districts (CHD) of Bangladesh. The communities that live on dangerous hill slopes in CHD repeatedly experience landslide hazards during the monsoon season, with casualties, economic losses and property damage. Although landslides are hazard events triggered by a variety of environmental phenomena, vulnerability emerging from a social system is predominantly responsible for disasters. With this background, this study develops an understanding of the root-causes of community vulnerability to landslides in the CHD.

To begin, two distinct groups of communities were identified, namely the urbanized hill communities and the indigenous hill communities. Seven urbanized and four indigenous communities were selected and compared by developing and applying mixed methods. Quantitative information from household-level questionnaires was associated with qualitative maps and diagrams from participatory rural appraisal surveys. A convergent parallel design and index based weighted average decision support model was applied, covering community-level vulnerability indicators for physical, social, economic, ecological, institutional and cultural aspects.

The urbanized hill communities were found to be highly vulnerable to landslides, as they are attracted by city pull factors, deprived of social justice and involved in indiscriminate hill cutting for developing settlements. They fail to incorporate indigenous knowledge and are culturally less aware of how to deal with hazard extremes in the hilly environment. In contrast, the indigenous communities have a distinctive history and culture, inherited lifestyle, customs, beliefs and values, traditional housing pattern, land tenure and ownership, administrative system, and agricultural practice as a major livelihood. These unique characteristics are facilitating the indigenous communities to address the different dimensions of community vulnerability to landslides.

Table of Contents

Declaration	2
Abstract	3
Table of Contents	4
List of Figures	10
List of Tables	20
List of Acronyms	25
Acknowledgements	27
Chapter 1: Introduction	28
1.1. Background	28
1.2. Landslides in the Chittagong Hill Districts	30
1.2.1. The Urbanized Hill Communities	32
1.2.2. Landslides and Institutional Aspects	35
1.2.3. The Indigenous Hill Communities	41
1.3. Research Hypothesis	41
1.4. Research Aim and Objective	42
1.5. Originality and New Knowledge	43
1.6. Structure of the Thesis	44
Chapter 2: Literature Review	47
2.1. Terminologies	47
2.2. The Essence of Vulnerability Research	49
2.3. Conceptual Framework of DRR	50
2.3.1. The Pressure-and-Release Model	51
2.3.2. The Vicious Circle of Increases in Vulnerability	51
2.3.3. Coupled Human-Environment Systems	52
2.3.4. Social Vulnerability to Climate Change and Extremes	52
2.3.5. The Disaster Resilience of Place Model	53

2.3.6. The Hazards of Place Model of Vulnerability	54
2.3.7. The Causal Structure of Vulnerability	54
2.3.8. The Double Structure of Vulnerability	55
2.3.9. Framework for Disaster Risk Reduction	55
2.3.10. The 'BBC' Conceptual Framework	56
2.3.11. Framework to Assess Climate Change-Induced Risks	56
2.3.12. The MOVE Framework	57
2.4. Approaches to Vulnerability and Resilience	58
2.5. Social Scales in DRR Research	63
2.6. The Concept of Community in DRR	65
2.7. Vulnerability Assessment Methods	68
2.8. Culture and Indigenous Knowledge in DRR	82
2.9. Research Approach	86
2.10. Participatory Research in DRR	90
2.11. Land Cover Mapping	92
2.12. Landslide Susceptibility Mapping	93
2.13. Vulnerability Assessment	94
2.14. Chapter Summary	97
Chapter 3: Methodology	98
3.1. Rainfall Pattern Analysis	98
3.2. Landslide susceptibility mapping modeling	100
3.2.1. LSM for CHD	100
3.2.2. LSM for Chittagong City Corporation	107
3.2.3. LSM for Cox's Bazar Municipality	110
3.2.4. Model Validation	118
3.2.5. Limitations of data collection and LSM	118
3.3. Questionnaire Surveying Method	120
3.3.1. Sample Size and Community Selection	121
3.4. PRA Surveying	123
3.5. Comparative Vulnerability Assessment	129

3.5.1. Indicator Selection	129
3.5.2. Vulnerability Index Calculation	134
Chapter 4: Study Area – Chittagong Hill Districts	140
4.1. Chittagong Hill Districts	140
4.2. Physical Characteristics	140
4.2.1. Relief and Geomorphology	140
4.2.2. Drainage	142
4.2.3. Vegetation	143
4.2.4. Soils	143
4.3. Population Growth	144
4.4. Land Cover Pattern in CHD	145
4.4.1. Land Cover Changes	145
4.4.2. Land Cover Modelling	148
4.5. Rainfall Pattern Analysis	154
4.6. Landslide Mechanism in CHD	160
4.7. LSM Results	163
4.8. The Need for Community Vulnerability Assessment	170
4.9. Summary of Findings	173
Chapter 5: Community Profile – Chittagong City Corporation	175
5.1. Chittagong City Corporation in Summary	175
5.1.1. Relief and Geology	177
5.1.2. Soils	179
5.1.3. Landslide Mechanism in CCC	180
5.2. Description of Landslide Causative Factors	181
5.2.1. Rainfall Pattern of Chittagong	181
5.2.2. Changes in Land Cover	182
5.3. LSM Results	185
5.3.1. Model Validation and Discussion on LSM	189

5.4. Identifying Vulnerable Communities in CCC	191
5.5. Location of the Selected Communities in CCC	193
5.6. Landslide Scenario in CCC	195
5.7. Profile of the Selected Communities	205
5.7.1. Historical Profile	205
5.7.2. Physical Environment	213
5.7.3. Results from Social and Resource Mapping	220
5.7.4. Results from Transect Mapping	223
5.7.5. Results from Vulnerability Mapping	226
5.7.6. Results from Mobility Mapping	229
5.7.7. Results from a Venn Diagram	231
5.7.8. Results from Cause Effect Diagram	234
5.7.9. Results from Pair-wise Ranking	235
5.7.10. Results from a SWOT analysis	239
5.7.11. Results from Dream Mapping	243
5.8. Chapter Summary	246
Chapter 6: Community Profile – Cox’s Bazar Municipality	248
6.1. Study Area Profile	249
6.2. Physiographic and Geological Features	250
6.3. Landslide Mechanism in CBM	252
6.4. Results from LSM	253
6.4.1. AHP and WLC Results	253
6.4.2. Multiple Logistic Regression Results	254
6.4.3. Validation of LSM	256
6.5. Identifying Vulnerable Communities in CBM	257
6.6. Landslide Scenario in CBM	258
6.7. Physical Environment	260
6.8. Community Profiling Using PRA Tools	263
6.8.1. Historical Profile	263
6.8.2. Social and Resource Mapping	270

6.8.3. Transect-Walk Mapping	273
6.8.4. Vulnerability Mapping	274
6.8.5. Mobility Mapping	277
6.8.6. Venn Diagram	279
6.8.7. Cause-Effect Diagram	279
6.8.8. Pair-wise Ranking of Problems	282
6.8.9. SWOT Analysis	284
6.8.10. Dream Mapping	287
6.9. Summary of Results Derived from Community Surveying	288
Chapter 7: Community Profile – Chittagong Hill Tracts	292
7.1. Historical Background	294
7.2. Unique Characteristics of the CHT	298
7.2.1. Population Distribution	298
7.2.2. Agricultural Practice	298
7.2.3. Traditional Administration and Legal System	299
7.2.4. Land Tenure and Ownership	301
7.2.5. Traditional Housing	302
7.2.6. Land as Cultural Heritage	302
7.3. Physical and Other Aspects	303
7.4. Landslides in the CHT	305
7.5. Indigenous Community Selection	308
7.6. Results from the Participatory Surveying	311
7.6.1. Historical Profile	312
7.6.2. Physical Environment	318
7.6.3. Social and Resource Mapping	323
7.6.4. Transect Walk Map	325
7.6.5. Vulnerability Map	326
7.6.6. Mobility Mapping	329
7.6.7. Venn Diagram	331
7.6.8. Pairwise-Ranking of Problems	333

7.6.9. SWOT Analysis	335
7.6.10. Dream Mapping	337
7.7. Summary of the Findings	338
Chapter 8: Results from Questionnaire Surveying	341
Chapter 9: Comparative Analysis	388
9.1. Extracting Indicator Scores	389
9.2. Vulnerability Index Results	396
9.3. Sensitivity Analysis	396
9.4. Critical reflection and limitations of the study	399
9.5. Chapter Summary	400
Chapter 10: Conclusions and Recommendations	403
10.1. Achievements of this Thesis	403
10.2. Future Research and Recommendations	412
10.3. Final Words	418
References	419
Appendices	
Appendix-I: Major landslide events in the Chittagong Hill Districts	445
Appendix-II: Landslide investigation form	449
Appendix-III: Questionnaire for landslide vulnerability assessment	453
Appendix-IV: Key informant survey questionnaire	459
Appendix-V: The major hilly sub-regions of Bangladesh	461

List of Figures

Figure 1.1. Total number of natural hazard induced disasters between 1900 and 2016.	28
Figure 1.2. Location of (a) Chittagong hill districts in Bangladesh, and (b) the urbanized and indigenous hill districts in CHD.	31
Figure 1.3. A fatal landslide event in Batali Hill, CCC on 1 July 2011. (a, b) – top view and (c, d) – bottom view.	33
Figure 1.4. Houses rebuilt in the same hazardous area after the 1 July 2011 landslide in Chittagong.	34
Figure 1.5. Reconstruction of the retention wall in Batali Hill, Chittagong. (b, c, d) top view and (a, e) bottom view.	34
Figure 1.6. Landslide vulnerable areas in Motijharna, CCC. (a, b) N-S view, and (c, d) S-N view.	35
Figure 1.7. Systematic hill cutting to build residential houses in Cox’s Bazar Municipality (CBM).	36
Figure 1.8. Flowchart showing causes of landslides in Chittagong as prepared by the Department of Environment, Chittagong Division.	37
Figure 1.9. Landuse change in Motijharna, Chittagong.	39
Figure 1.10. A cluster of highly vulnerable informal settlements at the top of Motijharna community was destroyed by the AC land office, Chittagong.	40
Figure 1.11. Indigenous hill communities in Bandarban district.	41
Figure 1.12. Thesis map.	45
Figure 2.1. Vulnerability and resilience intervention at multiple levels.	63
Figure 2.2. Interrelationship among various social levels.	64
Figure 2.3. Social and vulnerability maps prepared by the cyclone vulnerable communities in Kalapara Upazila, Patuakhali, Bangladesh.	91
Figure 3.1. The flowchart of research methodology.	99
Figure 3.2. (a) Landslide inventory, and (b) slope map of CHD.	102
Figure 3.3. (a) Aspect, (b) drainage, and distance from (c) fault-lineaments and (d) hill cut map of CHD.	104
Figure 3.4. (a) Land cover (2010), (b) precipitation (1950-2010), (c) distance from major road network, and (d) soil consistency map of CHD.	105

Figure 3.5. (a) Soil moisture, (b) soil permeability, (c) stream power index (SPI), and (d) topographic wetness index (TWI) map of CHD.	106
Figure 3.6. (a) Landslide inventory map (zoomed), and (b) hill-cutting map of CCC.	108
Figure 3.7. (a) Slope, and (b) aspect map of CCC.	109
Figure 3.8. (a) Distance from stream network, and (b) NDVI map of CCC.	109
Figure 3.9. (a) Rainfall pattern map, and distance from (b) road network, (c) drainage network, and (d) existing building structure map of CCC.	110
Figure 3.10. (a) Geological, (b) geomorphological, (c) distance from faults and lineaments, and (d) soil moisture map of CCC.	111
Figure 3.11. Landslide inventory map of CBM.	112
Figure 3.12. (a) Average annual precipitation of Bangladesh, (b) Average annual monsoon rainfall in CBM (1950–2010).	115
Figure 3.13. NVDI (top left), slope (top right), and distance from stream map (bottom left) and existing road network (bottom right) map.	116
Figure 3.14. Distance from existing drainage network (top left) and building structure (top right), and geological (bottom left) and geomorphological (bottom right) map of CBM.	117
Figure 3.15. Soil moisture (left), and distance from fault and lineaments map (right) of CBM.	118
Figure 3.16. Convergent parallel design in a mixed methods research.	124
Figure 3.17. (a) Household based questionnaires, and (b) community-based PRA surveying in Batali Hill, CCC.	127
Figure 3.18. Draft version of a social and resource map.	128
Figure 3.19. Final version of a social and resource map.	129
Figure 3.20. Method for combining quantitative and qualitative data.	138
Figure 4.1. (a) Digital elevation model (DEM) map of Bangladesh, and (b) slope map of the study area (CHD).	141
Figure 4.2. Physiographic map of Bangladesh.	142
Figure 4.3. Trend of population growth rate in the CHD.	144
Figure 4.4. Land cover map of (a) 1990, (b) 2000, and (c) 2010; and (d) the location of major urban agglomerations in CHD.	146

Figure 4.5. (a) Major land cover changes; changes [gains, losses, and persistence] in (b) bare soil, (c) built-up area, (d) hill forest, (e) vegetation; and (f) all type to built-up area in CHD from 1990-2010.	147
Figure 4.6. Contributions to net changes in land cover types.	148
Figure 4.7. Land cover change pattern in CHD.	149
Figure 4.8. The driver variables for land cover modelling.	151
Figure 4.9. The transition potential maps for land cover modelling.	153
Figure 4.10. The predicted land cover map (2030) of CHD.	154
Figure 4.11. Average (a) annual and (b) monsoon rainfall pattern in Bangladesh from 1950–2010.	155
Figure 4.12. The predicted rainfall images (until 2099) of (a) Chittagong, (b) Cox’s Bazar, and (c) Rangamati district.	158
Figure 4.13. Monthly rainfall variations during the monsoon in CHD (1950–2010).	162
Figure 4.14. A landslide affected area in Akbarshah colony area in CCC.	162
Figure 4.15. A landslide affected area in Badshah Miah road, CCC.	163
Figure 4.16. A landslide disaster hit area in Pahartoli, CCC.	165
Figure 4.17. (a) Landslide inventory, and (b) slope map of CHD.	168
Figure 4.18. (a) Aspect, (b) drainage, and distance from (c) fault-lineaments and (d) hill cut map of CHD.	169
Figure 4.19. (a) National seminar on landslide DRR in BUET, Dhaka; expert opinion surveying with the (b) chief town planner, CDA; (c) chief architect and town planner, CCC; (d) director, DoE, Chittagong; (e) knowledge sharing meeting with the Motijharna community people and (f) with the CDA Chairman and CDA officials in Chittagong.	170
Figure 4.20. A cluster of houses located on dangerous foothills where creeping debris flow is visible in Batali Hill, CMA.	172
Figure 5.1. Landslides in the Lalkhan Bazaar area, Chittagong City Corporation (CCC), Bangladesh. (a) Location of vulnerable houses, (b) landslide scar, (c) landslide deposit, and (d) destroyed houses.	176
Figure 5.2. Location of (a) Chittagong hill districts in Bangladesh, and (b) Chittagong City Corporation (CCC) in Chittagong district.	177
Figure 5.3. (a) Elevation, and (b) geological map of CCC.	178

Figure 5.4. (a) Mode of landslide movement; (b) different states of activity; (c) distributions of activity, and (d) styles of activity in CCC.	180
Figure 5.5. Land cover map of CCC in (a) 1990, (b) 2000, (c) 2010, and in (d) 2015.	183
Figure 5.6. (a) Major land cover, and (b) built-up area changes in CCC (1990–2015).	184
Figure 5.7. (a) Gains and losses by land cover types, and contributions to net change in (b) bare soil, (c) vegetation, and (d) built-up area (km ²) in CCC from 1990–2015.	185
Figure 5.8. The four principal components (a–d) derived from the landslide factor maps in CCC.	187
Figure 5.9. Landslide susceptibility maps applying the (a) MR with all layers, and (b) MR with PCA layers.	188
Figure 5.10. Assessing model performances based on the ROC curves.	190
Figure 5.11. (a) Location of landslides in CCC, and (b) the selected landslide clusters from CCC.	193
Figure 5.12. Location of Lalkhan Bazar in Chittagong City Corporation.	194
Figure 5.13. Location of (a) Motijharna and (b) Batali Hill community.	195
Figure 5.14. Location of (a) Golpahar and (b) Medical Hill community.	196
Figure 5.15. The landslide devastation on 19 July 2015.	197
Figure 5.16. Indiscriminate hill cutting for development of residential housing in Ispahani Hill, Kushumbagh, CCC.	198
Figure 5.17. Hill cutting soil is being transported as raw materials in the brickfields.	199
Figure 5.18. Brick-kiln owners are cutting hills and constructing new roads for easy transportation of the products near Salimpur, CCC.	200
Figure 5.19. Development of residential area by cutting hills near 9 number north Pahartali Ward, CCC.	201
Figure 5.20. People are being evicted from Motijharna community on 25 June 2014.	203
Figure 5.21. Temporary tents were provided for landslide vulnerable people in East Tiger-pass Govt. Primary School, near Batali Hill, Dobilmuring, Chittagong.	206

Figure 5.22. Settlements developed by cutting hills in Motijharna community, CCC.	214
Figure 5.23. (a) Blocked drain, (b) road-side drain and housing on vulnerable hill, (c) a market place, (d) waste disposal on road, (e) gas-supply at household level, and (f) road-side water supply network in Motijharna.	215
Figure 5.24. (a) Residential houses close to dangerously threatening hills, (b) settlements developed by cutting hills, (c) sand bags are used to protect the houses from landslides, (d) road cum drainage network, (e) water storage provision in tank, and (f) tin-shed housing at the top of the hill in Batali Hill community, CCC.	216
Figure 5.25. (a), (b) Residential houses developed by cutting hills, (c) drainage network cum earthen road, (d) tin-shed housing in hills, and (e) houses located close to vulnerable hills in Golpahar community, CCC.	217
Figure 5.26. (a) Typical residential housing, (b) stair-shape road and drainage network, (c) landslide vulnerable houses in dangerous slopes, (d) stair-shape earthen road network, (e) semi-built housing at the foothill, and (f) sand bags are used to protect the houses from landslides in Medical Hill.	218
Figure 5.27. Panoramic view of development of multi-storied buildings in (top) Goribullah Shah Hill, and (bottom) Ispahani Hill, Kushumbagh in CCC.	219
Figure 5.28. Social and resource map of (a) Motijharna, and (b) Batali Hill community, CCC.	222
Figure 5.29. Social and resource map of (a) Golpahar, and (b) Medical Hill community, CCC.	223
Figure 5.30. Transect map of Motijharna community (a) East-West, (b) West-East, (c) West-East, and (d) East-West direction (not to scale).	224
Figure 5.31. Transect map of Batali Hill community.	225
Figure 5.32. Transect map of Golpahar community.	226
Figure 5.33. Transect map of Medical Hill community, CCC.	226
Figure 5.34. Vulnerability map of (a) Motijharna, and (b) Batali Hill community, CCC.	228
Figure 5.35. Vulnerability map of (a) Golpahar, and (b) Medical Hill community, CCC.	229
Figure 5.36. Mobility map of (a) Motijharna, and (b) Batali Hill.	231

Figure 5.37. Mobility map of (a) Golpahar, and (b) Medical Hill community, CCC.	232
Figure 5.38. Venn diagram of (a) Motijharna, and (b) Batali Hill community, CCC.	233
Figure 5.39. Venn diagram of (a) Golpahar, and (b) Medical Hill community, CCC.	234
Figure 5.40. Cause-effect diagram of (a) Motijharna, and (b) Batali Hill community, CCC.	235
Figure 5.41. Cause effect diagram of (a) Golpahar, and (b) Medical Hill community, CCC.	236
Figure 5.42. Dream map of (a) Motijharna, and (b) Batali Hill.	244
Figure 5.43. Dream map of (a) Golpahar, and (b) Medical Hill.	245
Figure 6.1. (a) Location of CBD in CHD and (b) location of CBM.	249
Figure 6.2. Land cover maps of CBM (1990–2015).	251
Figure 6.3. Development of human settlements by illegal and indiscriminate hill cutting in CBM.	252
Figure 6.4. Landslide susceptibility map derived from the AHP method.	254
Figure 6.5. Landslide susceptibility map derived from the WLC method.	255
Figure 6.6. Landslide susceptibility map derived from the MLR model.	257
Figure 6.7. Assessment of the model performances using ROC curves.	258
Figure 6.8. (a, b) 3-D landslide location map of CBM, and (c) location of the selected communities in CBM.	259
Figure 6.9. (a) Landslide rescue operation near the hilltop circuit house in CBM, (b) a road and (c) a house submerged in flood water in CBM, and (d) thatched houses damaged due to flash flooding in CBD.	261
Figure 6.10. Land cover pattern maps of the selected communities on (left column) 25 January 2004, and (right column) 27 January 2016. Where, (a) Badsha Ghona, (b) Boiddo Ghona, and (c) Bagh Ghona community.	262
Figure 6.11. Hill cutting, environmental degradation, and highly landslide-vulnerable residential houses located on dangerous hillslopes in Badsha Ghona community.	264

Figure 6.12. (a, b) Road construction by hill cutting, (c-e, g) development of residential houses by destroying hills, and (f) a draw-well for household water supply in Boiddo Ghona community.	265
Figure 6.13. (a-c) Location of vulnerable houses on risky hillslopes, (d) a step-like internal road towards the hill, (e) construction of a new paved-road, (f) administering household questionnaires (g) and community based PRA surveying in Bagh Ghona community in CBM.	266
Figure 6.14. Social and resource map of (a) Badsha Ghona, (b) Boiddo Ghona, and (c) Bagh Ghona community in CBM.	272
Figure 6.15. Transect-walk map of Badsha Ghona community (a) east to west, and (b) west to east direction.	273
Figure 6.16. Transect-walk map of Boiddo Ghona community (a) east to west, and (b) west to east direction.	274
Figure 6.17. Transect-walk map of Bagh Ghona community (a) east to west, and (b) west to east direction.	275
Figure 6.18. Vulnerability map of (a) Badsha Ghona, (b) Boiddo Ghona, and (c) Bagh Ghona community in CBM.	277
Figure 6.19. Mobility map of (a) Badsha or Bagh Ghona, and (b) Boiddo Ghona community.	278
Figure 6.20. Venn diagram of (a) Badsha or Bagh Ghona, and (b) Boiddo Ghona community.	280
Figure 6.21. Landslide cause-effect diagram of (a) Badsha Ghona, (b) Boiddo Ghona, and (c) Bagh Ghona community in CBM.	282
Figure 6.22. Dream map of (a) Badsha Ghona, (b) Boiddo Ghona, and (c) Bagh Ghona community.	290
Figure 7.1. Location of the Chittagong Hill Tracts (CHT) in the Hindu Kush Himalaya (HKH) region and in Bangladesh.	293
Figure 7.2. (a) A traditional temporary hill-house in a <i>Jhum</i> plot, and (b) a <i>Jhum</i> field after setting on fire in Bandarban Hill Tracts.	300
Figure 7.3. Landslides as a natural occurrence in the CHT.	306
Figure 7.4. (a) Construction of road and (b-d) development of residential settlements by cutting hills, and (e, f) local people are cutting the hills for further development in open daylight violating the existing laws in Khagrachari Municipality, Bangladesh.	307

Figure 7.5. Landslides due to heavy rainfall damaged the only Bandarban Municipality to Thanchi sub-district access road in July 2015.	309
Figure 7.6. Location of the four selected tribal communities in the CHT.	311
Figure 7.7. An aerial view of Ruilui Para community in Rangamati district depicting the surrounding land cover pattern in (a) 2004, and in (b) 2014.	312
Figure 7.8. An aerial view of Sandak Para community in Bandarban district depicting the surrounding land cover pattern in (a) 2003, and in (b) 2013.	313
Figure 7.9. An aerial view of Kattrol Para community in Khagrachari district depicting the surrounding land cover pattern in (a) 2007, and in (b) 2015.	314
Figure 7.10. An aerial view of Kalaban Para community in Khagrachari district depicting the surrounding land cover pattern in 2015.	315
Figure 7.11. (a) A newly built typical tribal house in hill-slope, (b) the only access road, (c, g) a non-built house in flat land, (d) water storage facility, (e) me inside a tribal house after questionnaire surveying, (f) a Chakma woman is weaving with the traditional back strap loom, and (h) a solar panel for generating electricity in Kattrol Para, Khagrachari.	319
Figure 7.12. (a-c) Indigenous thatched houses, (d) the water tank storing water directly from natural falls, (e) the only access road, (f) conducting PRA and questionnaire surveying, and (g) a view of the village in Kalaban Para community, Khagrachari.	320
Figure 7.13. (a) A view of the community, (b) a new house is being constructed in the hill slopes, (c) a thatched house, (d) a house is built on various levels of stilts to adjust with the hill slopes, (e) a cluster of tribal houses, and (f) a water tank in Ruilui Para, Rangamati, (g) Me standing in front of a traditional tribal house, and (h) a road is dissected due to landslides in Sajek, Rangamati.	321
Figure 7.14. (a) A scenic view of the community, (b) a cluster of tribal houses, (c, d) traditional indigenous houses, (e) thatched houses built by the roadside, (f) a household is being facilitated by a solar panel, (g) the agricultural field just beside the <i>Sangu</i> River, and (h) me conducting questionnaire surveying in Sandak Para community, Thanchi, Bandarban.	322
Figure 7.15. Social and resource map of (a) Kattrol Para, Khagrachari; and (b) Sandak Para, Bandarban community.	323
Figure 7.16. Social and resource map of (a) Kalaban Para, Khagrachari; and (b) Ruilui Para, Rangamati community.	324

Figure 7.17. Transect walk map of (a) Kattrol Para, and (b) Kalaban Para community in Khagrachari.	325
Figure 7.18. Transect walk map of (a) Ruilui Para, Rangamati; and (b) Sandak Para, Bandarban community.	326
Figure 7.19. Vulnerability map of (a) Kattrol Para, Khagrachari; and (b) Sandak Para, Bandarban community.	327
Figure 7.20. Vulnerability map of (a) Kalaban Para, Khagrachari; and (b) Ruilui Para, Rangamati community.	328
Figure 7.21. Mobility map of (a) Kattrol Para, and (b) Kalaban Para community in Khagrachari.	329
Figure 7.22. Mobility map of (a) Ruilui Para, Rangamati; and (b) Sandak Para, Bandarban.	330
Figure 7.23. Venn diagram of (a) Kattrol Para, and (b) Kalaban Para community in Khagrachari.	331
Figure 7.24. Venn diagram of (a) Ruilui Para, Rangamati; and (b) Sandak Para, Bandarban.	332
Figure 7.25. Dream map of (a) Kattrol Para, Khagrachari; and (b) Sandak Para, Bandarban.	338
Figure 7.26. Dream map of (a) Kalaban Para, Khagrachari; and (b) Ruilui Para, Rangamati.	339
Figure 8.1. (c, d) Manufactured, (g, j) semi-manufactured and (a, b, e, f, h, i) non-manufactured houses in the selected communities in CHD.	343
Figure 9.1. Components for landslide disaster risk reduction strategy.	402
Figure 10.1. (a) A house built by cutting hills vertically (90°) in the urbanized hilly areas in Cox's Bazar Municipality, and (b, c) traditional indigenous housing in Sandak Para, Thanchi, Bandarban district, Bangladesh.	405
Figure 10.2. Factors affecting landslide vulnerability at social scales.	408
Figure 10.3. Hierarchy of various social levels to tackle landslides.	410
Figure 10.4. The relationship among various dimensions of community vulnerability and landslide disaster initiation in the Chittagong Hill Districts of Bangladesh.	410
Figure 10.5. Households devastated by landslides on the 13th June 2017 in Rangamati Sadar Upazila, Bangladesh.	411

- Figure 10.6.** (a) Proportions of urban and rural population in Bangladesh in percent of the total population, 1950 to 2050; (b) Proportions of urban population in Bangladesh as compared to the Southern Asia and Asia. 413
- Figure 10.7.** Electricity poles are being installed in the remote hills of Thanchi–Bandarban, Bangladesh. 415
- Figure 10.8.** The pathways to achieve sustainable development goals by addressing climate change impacts in Bangladesh. 416

List of Tables

Table 1.1. Major disasters in Bangladesh (1900–2016).	29
Table 2.1. A review of the methods used for vulnerability assessment.	69
Table 2.2. Contrasts and complementarities between quantitative and qualitative research.	89
Table 3.1. Indices for rainfall pattern analysis.	100
Table 3.2. Details of the Landsat 4-5 TM scenes of CHD.	102
Table 3.3. Land cover type for image classification.	103
Table 3.4. Details of the Landsat satellite images.	113
Table 3.5. Contents of different land cover types.	113
Table 3.6. Abbreviations for the selected communities.	120
Table 3.7. Justification for PRA tool selection.	125
Table 3.8. Justification for selecting the indicators from questionnaires.	130
Table 3.9. Justification for selecting the indicators from PRA surveying.	132
Table 3.10. Scaling of an indicator from the questionnaire.	136
Table 3.11. Scaling of an indicator from the questionnaire.	136
Table 4.1. Population growth over the years in the CHD.	144
Table 4.2. Cramer’s V for the driving variable.	152
Table 4.3. Transition probabilities for MLP_Markov modelling.	153
Table 4.4. Trends of the rainfall indices.	156
Table 4.5. Rainfall pattern at the selected stations.	156
Table 4.6. Landslide inventory (sample) in Chittagong.	161
Table 4.7. Correlation coefficients between principal components and landslide causative factors.	164
Table 4.8. Individual regression coefficients for MR_All method.	166
Table 4.9. Individual regression coefficients for MR_PCA method.	166
Table 4.10. Pairwise comparison matrix for AHP.	167

Table 5.1. Results of the soils classification.	179
Table 5.2. Correlation coefficients between principal components and landslide causative factors.	186
Table 5.3. Individual regression coefficients for MR_All method.	189
Table 5.4. Individual regression coefficients for MR_PCA method.	189
Table 5.5. Landslide hot spots in CCC.	191
Table 5.6. Community description of CCC.	194
Table 5.7. Timeline of Motijharna community, CCC.	206
Table 5.8. Timeline of Batali Hill community, CCC.	208
Table 5.9. Timeline of Golpahar community, CCC.	210
Table 5.10. Timeline of Medical Hill community, CCC.	211
Table 5.11. Pair-wise ranking of problems in Motijharna.	237
Table 5.12. Pair-wise ranking of problems in Batali Hill.	237
Table 5.13. Pair-wise ranking of problems in Golpahar.	238
Table 5.14. Pair-wise ranking of problems in Medical Hill.	238
Table 5.15. SWOT analysis of Motijharna community, CCC.	239
Table 5.16. SWOT analysis of Batali Hill community, CCC.	241
Table 5.17. SWOT analysis of Golpahar community, CCC.	242
Table 5.18. SWOT analysis of Medical Hill community, CCC.	242
Table 6.1. Pairwise comparison matrix for AHP.	253
Table 6.2. Factor weights for WLC analysis.	254
Table 6.3. ANOVA regression table for the F-test.	256
Table 6.4. T-test (23081) results of the individual MLR coefficients.	256
Table 6.5. Brief community description.	260
Table 6.6. Timeline for Badsha Ghona.	267
Table 6.7. Timeline for Boiddo Ghona.	268
Table 6.8. Timeline for Bagh Ghona.	270
Table 6.9. Pair-wise ranking of problems in Badsha Ghona.	282
Table 6.10. Pair-wise ranking of problems in Boiddo Ghona.	283
Table 6.11. Pair-wise ranking of problems in Bagh Ghona.	284
Table 6.12. SWOT analysis of Badsha Ghona community.	285

Table 6.13. SWOT analysis of Boiddo Ghona community.	286
Table 6.14. SWOT analysis of Bagh Ghona community.	287
Table 7.1. Distribution of Ethnic and Bengali Population in the CHT.	281
Table 7.2. Distribution of Tribal Population in the CHT.	282
Table 7.3. Urbanization pattern in the CHT.	292
Table 7.4. Brief community description.	298
Table 7.5. Pair-wise ranking of problems in Kattrol Para, Khagrachari.	320
Table 7.6. Pair-wise ranking of problems in Kalaban Para, Khagrachari.	320
Table 7.7. Pair-wise ranking of problems in Ruilui Para, Rangamati.	321
Table 7.8. Pair-wise ranking of problems in Sandak Para, Bandarban.	321
Table 7.9. SWOT analysis of Kattrol Para community, Khagrachari.	322
Table 7.10. SWOT analysis of Kalaban Para community, Khagrachari.	323
Table 7.11. SWOT analysis of Ruilui Para community, Rangamati.	323
Table 7.12. SWOT analysis of Sandak Para community in Bandarban.	324
Table 8.1. Family size.	350
Table 8.2. The year since when the respondent started living in this area.	350
Table 8.3. The reason the respondent is settled in this community.	351
Table 8.4. Property or house owned by the respondent.	352
Table 8.5. Owner of the property or house.	352
Table 8.6. Builder of the house.	353
Table 8.7. Household type based on building materials.	353
Table 8.8. Purpose of using the hill or the surroundings of the house or property.	354
Table 8.9. Need to travel to workplace.	355
Table 8.10. Distance to workplace.	355
Table 8.11. Distance to nearby primary school or educational facilities.	356
Table 8.12. Distance to nearby marketplace.	356
Table 8.13. Distance to nearby commercial bank or financial institutions.	357
Table 8.14. Distance to the nearest playground or open space.	358
Table 8.15. Distance to the nearest healthcare facility.	358

Table 8.16. Road condition.	359
Table 8.17. Drainage facilities.	359
Table 8.18. Water supply condition.	360
Table 8.19. Electricity facility.	360
Table 8.20. Sanitation facility.	361
Table 8.21. Gas facility.	361
Table 8.22. Gender ratio.	362
Table 8.23. Household occupation.	362
Table 8.24. Household members average age.	364
Table 8.25. Level of household education.	364
Table 8.26. Average monthly income of the household.	365
Table 8.27. Rent paid by the respondent for the land or house.	366
Table 8.28. Monthly amount paid as house or room rent.	366
Table 8.29. Financial help received from any family members.	367
Table 8.30. Remittance received from any family members.	367
Table 8.31. Borrowing micro-credits.	368
Table 8.32. Amount borrowed from the micro-finance institutions.	368
Table 8.33. Interest rate paid for borrowing micro-credits.	369
Table 8.34. Threats or problems facing living in this community or area (% of households).	369
Table 8.35. Advantages of living in this community or area.	370
Table 8.36. Problems faced if relocated or evicted.	371
Table 8.37. Problems after relocation or eviction.	372
Table 8.38. Ways to improve living standard.	372
Table 8.39. Intensity of landslide as a problem.	373
Table 8.40. People vulnerable to landslides.	374
Table 8.41. Frequency of landslide occurrences.	374
Table 8.42. Triggering causes of landslides.	375
Table 8.43. Negative impacts of landslides.	376
Table 8.44. Last landslide observed.	377
Table 8.45. Respondents' location during landslides.	378
Table 8.46. Response to landslides.	378

Table 8.47. The respondent's vulnerability to landslides.	379
Table 8.48. Reasons of vulnerability or not being vulnerable to landslide hazards.	379
Table 8.49. Positive impacts of monsoon rain (% of households).	380
Table 8.50. Negative impacts of monsoon rain.	380
Table 8.51. Relocation during monsoon.	381
Table 8.52. NGO or local committee working on landslide issues.	382
Table 8.53. Emergency services during landslides (% of households).	382
Table 8.54. Comment on rescue effort.	383
Table 8.55. Compensation for the victims.	383
Table 8.56. Participated in disaster preparedness training or drill.	384
Table 8.57. Availability of landslide an early warning system.	384
Table 8.58. Getting meteorological information.	385
Table 8.59. Response after getting early warnings for landslides.	386
Table 8.60. Contact number or address of the nearest emergency services or relevant agencies.	386
Table 8.61. Landslide disaster risk reduction strategy.	387
Table 9.1. Indicator weights and scores (after scaling) based on household questionnaires.	390
Table 9.2. Indicator weights and scores based on PRA surveying.	392
Table 9.3. Vulnerability indices of different communities.	397
Table 9.4. Vulnerability indices of different communities considering various scenarios.	398

List of Acronyms

ASTER	Advanced Space-borne Thermal Emission and Reflection Radiometer
BARC	Bangladesh Agricultural Research Council
BBS	Bangladesh Bureau of Statistics
BMD	Bangladesh Meteorological Department
BUET-JIDPUS	Bangladesh University of Engineering and Technology- Japan Institute of Disaster Prevention and Urban Safety
CBDRR	Community-based Disaster Risk Reduction
CBM	Cox's Bazar Municipality
CCA	Climate Change Adaptation
CCC	Chittagong City Corporation
CDA	Chittagong Development Authority
CDMP	Comprehensive Disaster Management Programme
CHD	Chittagong Hill Districts
CHT	Chittagong Hill Tracts
DAP	Detailed Area Plan
DEM	Digital Elevation Model
DoE	Department of Environment
DRR	Disaster Risk Reduction
FAO	Food and Agriculture Organization
GIS	Geographic Information System
GoB	Government of Bangladesh
GPS	Global Positioning System
GSB	Geological Survey of Bangladesh
HKH	Hindu Kush Himalayan
ICIMOD	International Centre for Integrated Mountain Development
IFRC	International Federation of Red Cross and Red Crescent Societies
IHC	Indigenous Hill Community
ILO	International Labour Organization

IPCC	Intergovernmental Panel on Climate Change
LSM	Landslide Susceptibility Modelling
MSL	Mean Sea Level
NDVI	Normalized Difference Vegetation Index
NGO	Non-Governmental Organizations
PRA	Participatory Rural Appraisal
RS	Remote Sensing
SDSM	Statistical Downscaling Model
SPSS	Statistical Package for the Social Science
SWOT	Strengths, Weaknesses, Opportunities, and Threats
UHC	Urbanized Hill Community
UN	United Nations
UNDP	United Nations Development Programme
UNESCO	United Nations Educational, Scientific and Cultural Organization
UNICEF	United Nations Children's Fund
UNISDR	United Nations Office for Disaster Risk Reduction
USGS	United States Geological Survey
UTM	Universal Transverse Mercator
WGS	World Geodetic System

Acknowledgements

Bayes Ahmed is a Commonwealth Scholar funded by the UK govt. First, I want to thank Professor Dr. David Alexander, my principal supervisor. My first communication with Professor David was on 23 November 2012, when he agreed to supervise me and supported my scholarship application. Since then we are working together. Professor David always embraced my ideas, and there was never a deadline pressure from him. I am so lucky to have a supervisor like him, and I truly believe that this thesis was not possible without his enduring guidance at every stage of my PhD journey. I am also grateful to my subsidiary supervisor Dr. Ilan Kelman. He assisted me in writing journal manuscripts and his comments helped to shape my PhD thesis. I am also thankful to my UCL Institute for Risk and Disaster Reduction (IRDR) mentors and colleagues for arranging additional funding for my PhD work and inspiring me to submit this thesis. Thanks to Professor Peter Sammonds, Dr. Rosanna Smith, Dr. Shamsudduha and my friends at UCL IRDR. This thesis is examined by Professor Ben Wisner (Internal) and Professor Thomas Glade (External).

Fieldwork was a vital part of my PhD thesis. I am grateful to my research assistants who helped me during those hardship days surveying in the remote and dangerous hills. The fieldwork was not possible without the help from numerous government organizations, landslide experts and university professors in Bangladesh. I truly acknowledge the local people and communities living on the hills – without their support I could not collect the much-needed primary field level data.

My parents sacrificed unconditionally for my success. My father – Md. Abdus Sattar – and my mother – Mrs. Suraiya Begum – never gave up; they supported my study and work. Conducting a PhD was a stressful journey, and I want to thank my wife – Samira Subah – for tolerating me during this time and giving me mental support. I also want to take this opportunity to thank my sister – Jarin Rosal, my in-laws, relatives and close friends. All of you have contributed to finish writing my PhD thesis. I studied in publicly funded schools, college and university in Bangladesh, and finally I want to thank the general people of Bangladesh for supporting my education with scholarships throughout my whole career. I am indebted to all of you!

Chapter 1

Introduction

1.1. Background

Disasters resulting from environmental hazards are prominent worldwide and are responsible for casualties, human displacement and property damage on a catastrophic scale. Around 1,388 disasters were reported worldwide from 2013–2016 and around 45% of all those disasters only occurred in Asia (Figure 1.1). In 2015, the United Nations (UN) registered 346 disasters worldwide that caused more than 22,000 deaths (approximately 72% occurred in Asia), affected almost 100 million people and the economic damage totalled approximately 66.5 billion US dollars (UNISDR/CRED 2016). The World Economic Forum has acknowledged extreme weather events, failure of climate-change mitigation and adaptation, and natural hazards triggering catastrophes as the top global risks for the next 10 years (World Economic Forum 2016).

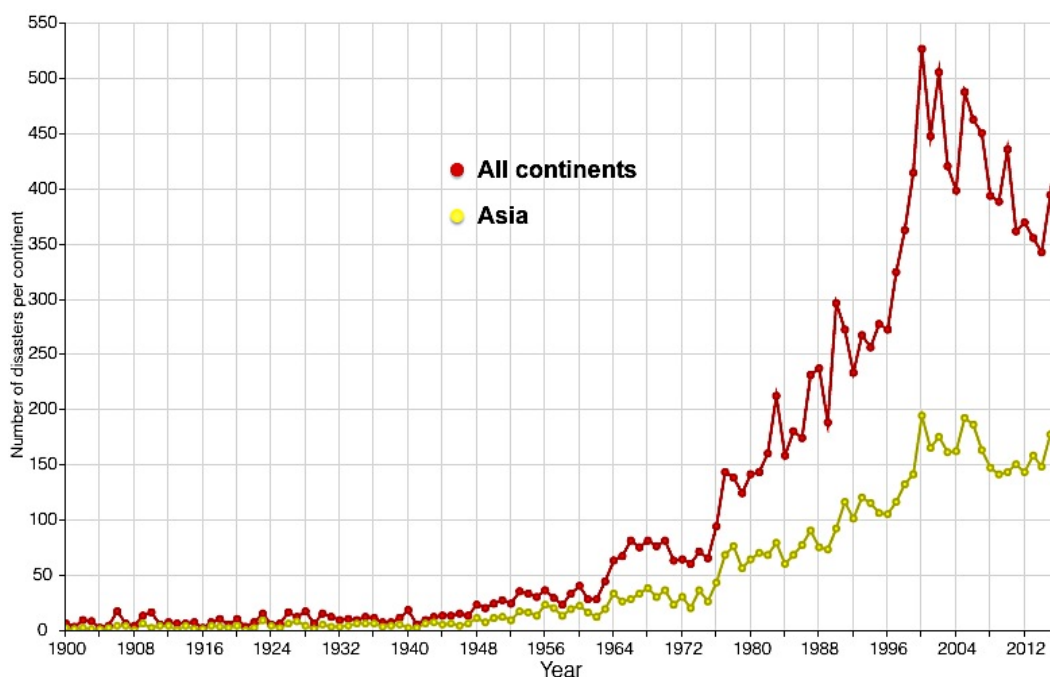


Figure 1.1. Total number of natural hazard induced disasters between 1900 and 2016. Source: EM-DAT 2017, the OFDA/CRED International Disaster Database – www.emdat.be - Université Catholique de Louvain, Brussels, Belgium.

In Bangladesh, at least 22,500 people were reportedly killed and 130 million people were affected by disasters from 1995–2014 (World Disasters Report 2015). At present, Bangladesh is ranked as the world’s fifth most disaster-prone country (World Risk Report 2016; UNISDR/CRED 2016). Historically, disasters such as flooding, tropical cyclones, storm surges, and drought (Table 1.1) are dominant in Bangladesh. The recent trend of spontaneous urbanization in the hills (i.e. covering approximately 10% of the total land area of Bangladesh) and the resulting impact of landslides on hilly communities indicate a sharp escalation of landslide disaster risks in Bangladesh (Ahmed and Rubel 2013; BUET-JIDPUS 2015; Ahmed and Dewan 2017). Yet most hazard-related research for Bangladesh focuses on tropical cyclones (Ahmed et al. 2016; Mallick et al. 2017), flooding (Brouwer et al. 2007), and diseases (Ali et al. 2005; Hashizume et al. 2008), with some work on droughts (Brammer 1987) and earthquakes (Steckler et al. 2016), but with little research on landslides (Chisty 2014; Mia et al. 2016).

Table 1.1. Major disasters in Bangladesh (1900–2016).

Disaster Type	Disaster Subtype	Events Count	Total Deaths	Total Affected
Drought	Drought	7	1,900,018	25,002,000
Earthquake	Ground movement	8	43	19,395
Earthquake	Tsunami	1	2	0
Epidemic	Parasitic disease	3	1,396	69,904
Epidemic	Viral disease	5	393,085	48,928
Epidemic	Bacterial disease	5	3,639	420,479
Extreme temperature	Heat wave	2	62	0
Extreme temperature	Cold wave	18	2,148	313,200
Extreme temperature	Severe winter	2	230	101,000
Flood	Riverine flood	45	7,278	138,558,760
Flood	Coastal flood	2	51	473,335
Flood	Flash flood	11	261	7,634,577
Landslide	Landslide	8	200	56,283
Storm	Tropical cyclone	88	626,935	78,965,167
Storm	Convective storm	37	2,108	1,470,091
Storm	Others	98	5,5621	182,336,367

Source: EM-DAT, the OFDA/CRED International Disaster Database – www.emdat.be - Université Catholique de Louvain, Brussels, Belgium.

Landslides are recognized as the third type of natural hazard induced disaster in terms of worldwide importance (van Westen et al., 2011). Landslides and associated slope failure phenomena (e.g. debris flows and mudslides) are a major hazard around the world and occur frequently due to rainfall in South Asia (Chapagai 2011). From 2004–2010, around 2,620 non-seismic and fatal landslides were recorded worldwide causing at least 32,322 deaths, with the majority of human losses occurring in Asia, especially along the Himalayan Arc (Petley 2012), although Asia is the most populous continent, so vulnerability plays a significant role in the landslide disasters experienced. On 22 July 2016, at least 154 people were killed and some 8.6 million people were affected by destructive floods and landslides caused by heavy rain in China (ReliefWeb 2016). The earthquakes that struck Nepal on 25 April 2015 caused at least 3,000 landslides and other mass movements (ICIMOD 2015). The Abe Berek landslide that hit Ago district, Afghanistan on 2 May 2014 was rainfall-induced and killed almost 2,700 people (Zhang et al. 2015). Similar to China, Nepal and Afghanistan, the south-eastern hilly region of Bangladesh (i.e. the study area) is a part of the Hindu Kush Himalayan (HKH) region and is highly vulnerable to landslides due to torrential rainfall and earthquakes.

Disasters are socially constructed. The steep-slopes or the hills are solely not responsible for landslides, but the people residing on the hills and their associated vulnerability cause landslide disasters (O’Keefe et al., 1976). Alexander (2016) has mentioned – “vulnerability is the main component of risk and may be more important than hazard or threat, as small hazards can cause big disasters if vulnerability is high (p. 254)”. Henceforth, it requires a holistic understanding of the various components of community vulnerability to reduce the landslide disaster risks and this is the primary motivation for this research.

1.2. Landslides in the Chittagong Hill Districts

Landslides are a common problem in the Chittagong hill districts (CHD) of Bangladesh (Figure 1.2a). CHD is broadly classified into two major groups (Figure 1.2b): urbanized hill districts (includes Chittagong and Cox’s Bazar) and indigenous hill districts (includes Bandarban, Khagrachari and Rangamati). Although landslide disasters were infrequent in densely populated Bangladesh

in the past, increasing human activities such as hill cutting for residential development has resulted in many landslides. This is particularly evident in the CHD, putting people and properties at risk. In recent years, devastating landslides have repeatedly hit CHD and caused casualties, damages and loss (Appendix-I). People particularly living on the steep slopes in the urbanized hill districts are highly vulnerable to landslide disasters (Ahmed 2015a,b). Most recently on 13 June 2017, rainfall triggered landslides caused at least 160 deaths in Rangamati, Chittagong and Bandarban districts. Thousands of families took refuge in different shelters. Till now, this is considered as the biggest landslide disaster in Bangladesh. Another notable landslide event occurred on 11 June 2007 that killed about 128 people in the vicinity of various hills because of landslides triggered by heavy rainfall (610 mm) for eight consecutive days (Ahmed and Dewan 2017).

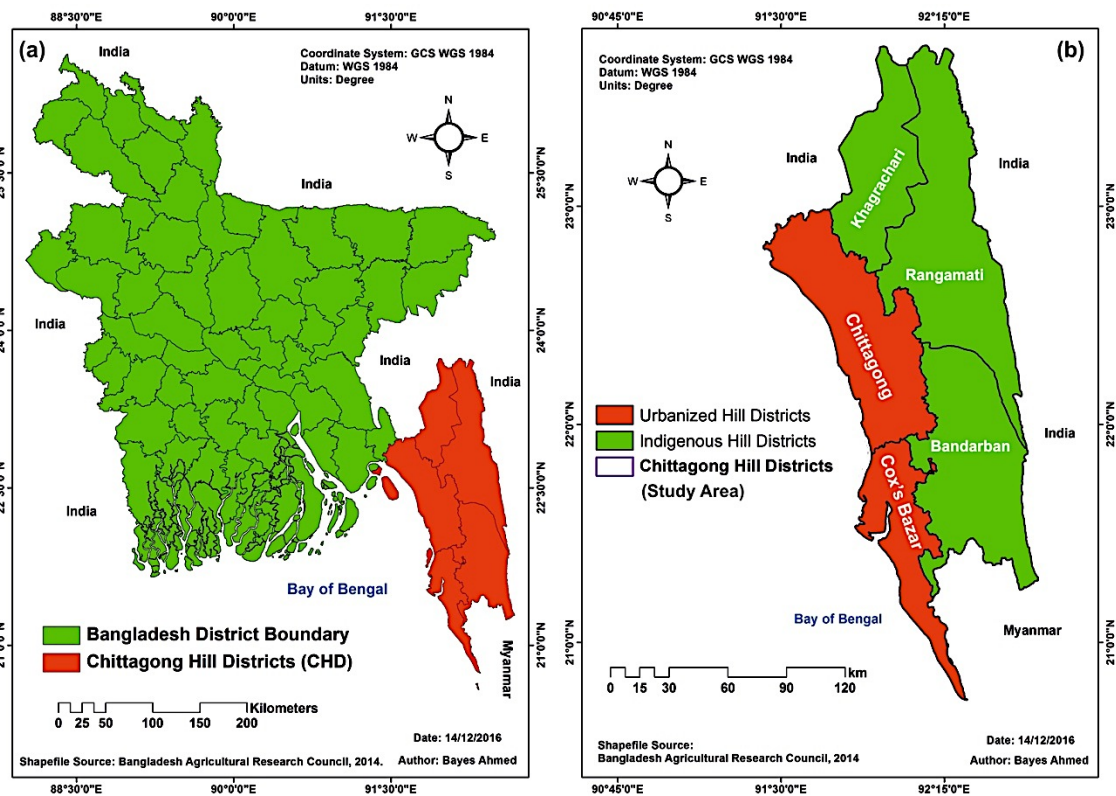


Figure 1.2. Location of (a) Chittagong hill districts in Bangladesh, and (b) the urbanized and indigenous hill districts in CHD. Source: Bayes Ahmed.

The major landslides in the CHD were related to extreme rainfall intensities in a short period of time and much higher rainfall amount compared to the monthly average (CDMP-II 2010: 107; Khan et al. 2012). The Chittagong hill tracts consist of sequences of valleys and hills, coinciding, respectively, with synclines

and anticlines of late Tertiary age, generally elongated in a NNW–SSE trend. The main outcropping formations in Chittagong area are, from the older to the younger, Bubhan formation (Miocene), Boka Bil formation (Miocene- Pliocene), Tipam sandstone (Miocene- Pliocene), Girujan Clay (Neogene- Pleistocene), Dihing and Dupi Tila formation (Pliocene- Pleistocene). The hills in the CHD are mainly composed of unconsolidated or little-consolidated beds of sandstones, siltstones and shales, with minor beds of limestone and conglomerates (Chowdhury 2015; Brammer 1986: 10). The weakness of such formations, coupled with steep slopes and heavy rainfall (especially in the monsoon season, May–September), makes this area highly vulnerable to landslides (Ahmed 2015c). Increased population pressure, rapid urban growth, improper land use, weak governance, hill cutting, indiscriminate deforestation and agricultural practices are further aggravating the situation (Sarker and Rashid 2013; Ahmed and Dewan 2017). The changing global climate is also posing a serious threat in the region, and the likelihood of increased precipitation could worsen landslide hazards in CHD (IPCC 2014). CHD is also located in a high-risk earthquake area (Cummins 2007; Steckler et al. 2016) susceptible to cyclones or storms (Islam and Peterson 2009) zone, which could trigger more landslide events.

1.2.1. The Urbanized Hill Communities

Landslides are mostly associated with human activity and community vulnerability in the urban areas. For instance, a retention wall in Batali Hill area in Chittagong City Corporation (CCC) collapsed and fell down next to the nearby informal settlements on 1 July 2011 at 7 in the morning (Figure 1.3). The event was responsible for 19 human fatalities and several houses were destroyed. The CCC authority was in charge of constructing the retention wall (which was approximately 10 m high and 50 m long) to protect the surrounding houses and the road above it from potential landslides. Unfortunately, even though it was supposed to save lives and protect property, a part of the retention wall (10.5 metres wide) collapsed and caused a devastating landslide. The triggering factors of this landslide were several days of heavy rainfall, overexploited soil-strength and low quality of construction works. As a consequence, four concerned CCC engineers were temporarily suspended. It

represents the interaction of both the physical and social aspects (human activity) of vulnerability in creating a disaster. Accordingly, landslides in the CHD can be considered as socio-natural hazards (UNISDR 2017).



Figure 1.3. A fatal landslide event in Batali Hill, CCC on 1 July 2011. (a, b) – top view and (c, d) – bottom view. Source: Department of Environment, Chittagong, Bangladesh; July 2014.

After this incident, the nearby informal houses were evacuated, but the residents came back after several months and started to live in the same disaster-hit area (Figure 1.4). The construction of the retention wall was suspended until 2013. Thereafter, in 2014, the authorities started erecting it again with design modifications. The new design integrated a drainage network along the roadside and additional reinforcing pillars at the back of the walls to prevent future landslides (Figure 1.5). Considering the degraded soil condition, steep slopes, high amounts of rainfall in the monsoon season and the

surrounding exposed households, this place still poses a serious threat of landslides. This is a typical scenario of community-level landslide vulnerability in the urbanized hill districts of Bangladesh.



Figure 1.4. Houses rebuilt in the same hazardous area after the 1 July 2011 landslide in Chittagong. Source: Bayes Ahmed, September 2013.



Figure 1.5. Reconstruction of the retention wall in Batali Hill, Chittagong. (b, c, d) top view and (a, e) bottom view. Source: Bayes Ahmed, field visit, September 2013 and July 2014.

Figure 1.6 depicts how the people of Motijharna, a residential area surrounding a hill in CCC, are living with the risks of landslides.

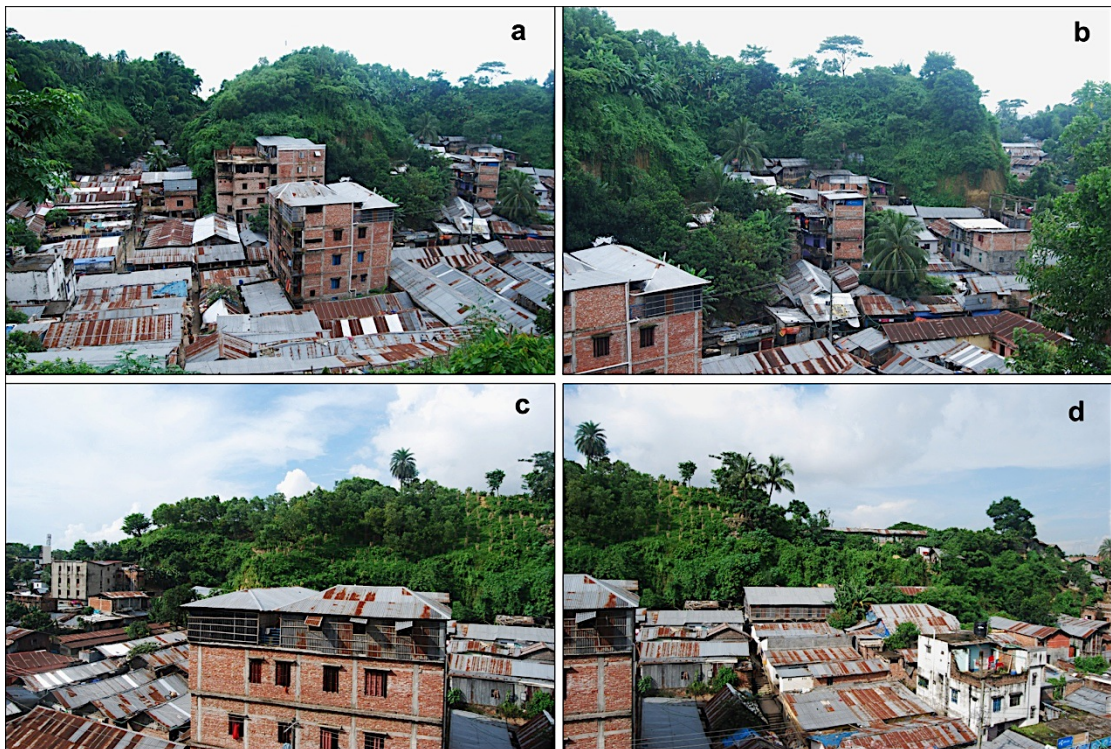


Figure 1.6. Landslide vulnerable areas in Motijharna, CCC. (a, b) N-S view, and (c, d) S-N view. Source: Bayes Ahmed, field visit, September 2013.

The loss and damage due to landslides are also evident in Cox's Bazar Municipality (CBM), Bangladesh. The first fatal landslide event (with 6 casualties) in CBM was recorded on 16 June 2003. A series of other rainfall-triggered landslides killed at least 47 people in CBM on 15 June 2010 (CDMP-II 2012). The arrival of a large number of marginalized people from other parts of Bangladesh is evident in CBM. The concerned authorities are failing to offer them cheap and safer accommodation on flat lands with necessary community facilities. To support their livelihoods, the marginalized people illegally cut the hills for the development of residential houses (Figure 1.7) and are consequently making themselves vulnerable to landslides (Ahmed 2015b).

1.2.2. Landslides and Institutional Aspects

There is no strict hill management system in the urbanized hill districts. This has encouraged many informal settlements to grow on the landslide-prone hill slopes in CCC. These settlements are considered as illegal by the formal

authorities, while the settlers claim themselves to be legal occupants or owners of the hills. An acute land tenure conflict has been on going among the public agencies, settlers, powerful elites and the local community representatives over the past few decades. This kind of contradiction has undermined the institutional arrangement for reducing landslide risk in the urbanized hilly areas. (Ahmed and Rubel 2013).



Figure 1.7. Systematic hill cutting to build residential houses in Cox's Bazar Municipality (CBM). Source: Bayes Ahmed, fieldwork, August to October 2014.

The Chittagong Department of Environment (DoE) is primarily responsible for protecting and managing the hills. On 13 March 2008, after the 11 June 2007 catastrophic landslide event in CCC, the DoE submitted an investigation report to the Government of Bangladesh (GoB). The report depicted a sequential flowchart of the causative factors of landslides (Figure 1.8). Not surprisingly, the components of landslides as identified by the DoE were largely focused on physical or hazard related aspects (i.e. geology, soil, and rainfall etc.). The human-induced factors were only limited to hill cutting and deforestation. The other essential components of community vulnerability such as social, economic, cultural and institutional dimensions were clearly missing (Figure 1.8).

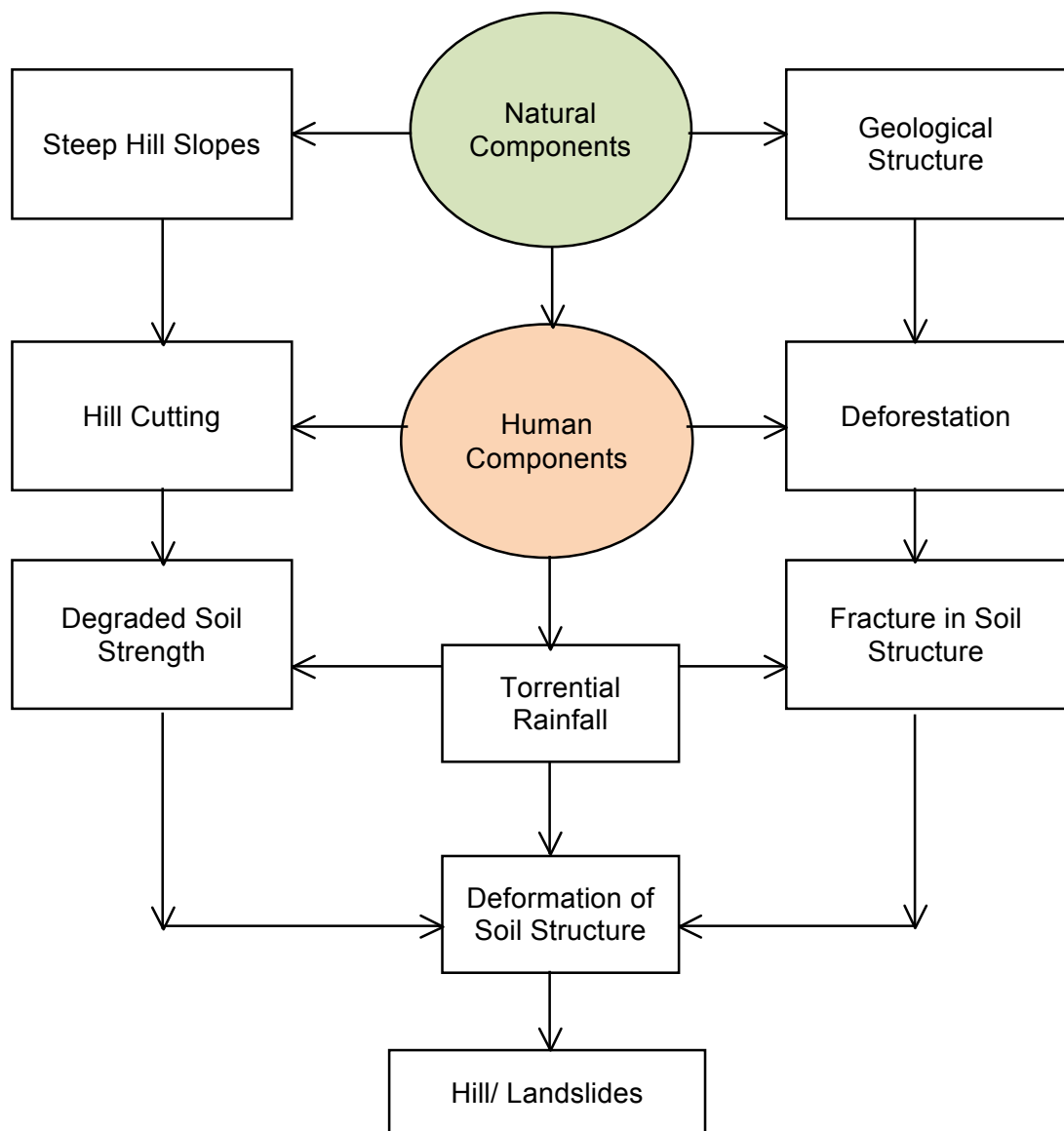


Figure 1.8. Flowchart showing causes of landslides in Chittagong as prepared by the Department of Environment, Chittagong Division, March 2008.

The Building Construction (Amendment) Ordinance, 1990 (section 3C.1) states that hill cutting is allowed only for the construction of dwelling houses without causing any major damage to the hill, especially if there is any issue of major public interest (GoB 1990: 86). According to the Bangladesh Environment Conservation (Amended) Act 2010 (section 6B under Act No. 1 of 1995), it is prohibited to cut or raze hills by a person or government institution or semi-government or autonomous organization or occupied by personal acquisition unless in the case of necessity of national interest (GoB 2010: 9126). It clearly puts restriction on hill cutting. These two coexisting hill protection related (by-) laws are contradictory and have some grey-areas in defining what is national or public interest or what it means by damage to hills. The Chittagong

Development Authority (CDA) prepared the Chittagong Metropolitan Master Plan (1995-2015), which was officially approved by the GoB in 1999. The master plan consists of a structure plan, urban area plan, and a detailed area plan (DAP). The plans have detailed and strict land use guidelines for both the public and private sector development. The following guidelines are clearly mentioned in the DAP to protect the hills in CCC (DAP 2009: 3-27 and 3-29):

- All types of hill cutting should be stopped. In the case of an absolutely necessary government project for public interest, it can be allowed after proper environmental impact assessment, public hearing, expert opinion and law clearance etc.
- The areas already affected by hill cutting should not be allowed for development, rather it should be turned to green belts and the levelled land should be covered with forest at the cost of the land grabbers.
- All the slums and squatters should be gradually removed and the inhabitants should be rehabilitated from the hilltops, slopes and valleys.
- The existing hills have been mapped in the DAP, but the respective authorities should survey and update the information of the hills regularly.

Despite having all the gazetted rules and regulations to protect the hills and ensure safety of lives and property, a group of people are taking advantage of the inconsistencies in the by-laws and violating the existing laws, and are building housing complexes by cutting the hills. For example, in 2008, there was not a single high-rise building in the Motijharna area. Then, within the next six years (in 2014), two five-storey buildings were constructed by cutting the hills (Figure 1.9). It clearly depicts how institutional weaknesses are making people and communities more vulnerable to landslides. The people living with landslide risks in the urbanized hills mostly belong to marginalized communities, who are quite new in dealing with the hilly environment. Their monthly income is much less than the national average and many of them are environmental refugees or displaced due to minority attack or political violence or are victims of other disasters. Yet the government has no plan to provide reasonable accommodation for the disadvantaged people who live on the dangerous hillslopes (Sarker and Rashid 2013; Ahmed and Rubel 2013).

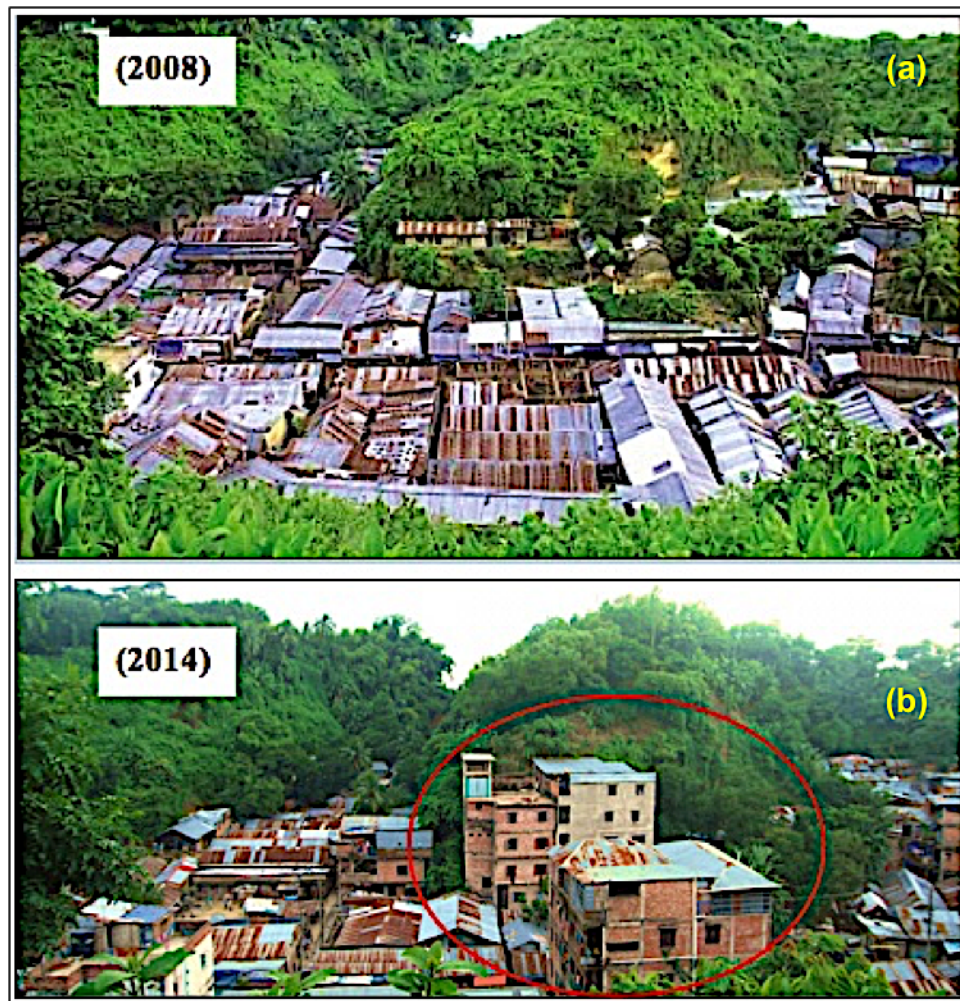


Figure 1.9. Landuse change in Motijharna, Chittagong. Source: **(a)** DoE, Chittagong; and **(b)** Bayes Ahmed, September 2014.

The urbanized hill people neither are capable of making their houses landslide-resistant, nor are they aware of using indigenous knowledge for building safer houses on the hills. They are also culturally less aware of how to utilize the surrounding hills and forests in a sustainable way. It makes them both socio-economically and culturally vulnerable to landslides. The concerned authorities have failed to bring social justice to address community level vulnerability and they are more decisive about the geological and engineering solutions to landslides. The key informants were found to be well aware of the landslide disaster situation in the CHD and they were in full support of implementing the master plans and hill cutting related regulations (BUET–JIDPUS 2015). The assistant commissioner (AC) of Land in Chittagong circle took initiatives to evacuate the people living on the dangerous hills in the monsoon of 2014 (Figure 1.10). After a few weeks, the inhabitants came back (in some cases new occupants were rented) and started living on the same place.



Figure 1.10. A cluster of highly vulnerable informal settlements at the top of Motijharna community was destroyed by the AC land office, Chittagong. Source: Bayes Ahmed, fieldwork, July 2014.

A Web-GIS based and a community based landslide early warning system was also introduced in CCC (BUET-JIDPUS 2015) and CBM (CDMP-II 2012) respectively, but the attempts failed, as there was no interest among the urbanized hill communities and respective authorities. It proves institutional interventions such as preparing land use plans, restricting settlement on the hills and enforcing hill cutting law are not enough to address the landslide problems in urban areas.

In a nutshell, the influx of urban migrants, lack of cultural knowledge in dealing with hill environments, socio-economic vulnerability and in some cases institutional detachment are making the landslide disaster scenario worse in the urbanized hilly areas in CHD. To address these issues, this study will focus on the community vulnerability aspect to identify the root causes and attraction forces for residing on the hill slopes, and to analyse peoples' risk perception.

1.2.3. The Indigenous Hill Communities

In contrast to the situation described in the previous section, the impacts of landslides are much smaller among the indigenous hill communities (IHC). The IHC have lived on the hills (Figure 1.11) since time immemorial and they consider the hills as their ancestors' land (Roy 2000). The IHC do not enjoy formal electricity and water supply or other basic utility and community facilities, yet still they are resilient to landslides. The urbanized hill communities (UHC) mostly use the hills for temporary accommodation purposes and they are more concerned about residing close to a city centre. In contrast, the IHC treat the hills as a sacred place and the hills are part of their cultural identity (Roy 2000). They also have the necessary indigenous knowledge, inherited through generations, to deal with the hills, the natural hazards and the surrounds in a sustainable way. For example, they build houses in a traditional way by preserving the hillslopes, which ensures adequate defence against slope failures. This research studies the IHC in order to understand the relationships between culture and landslide disaster risk reduction (DRR) in Bangladesh.



Figure 1.11. Indigenous hill communities in Bandarban district, Bangladesh.
Source: Bayes Ahmed, field visit, 2013–14.

1.3. Research Hypothesis

It is apparent that landslide disasters in the urbanized hilly areas in the CHD are triggered by a combination of physical, social, economic, ecological, institutional and cultural components. In order to identify, address and understand the root causes of landslides in Bangladesh, this research will focus on these multi-dimensional facets of vulnerability at the community level.

In this research, two different groups of communities have been identified in the CHD namely, the urbanized hill communities (UHC) and the indigenous hill communities (IHC). It is assumed that the IHC have a strong perception of landslide risk (e.g. indigenous knowledge), cultural beliefs (e.g. a sense of belonging to nature) and coping strategies (e.g. cultivation methods, building materials, architecture and the land tenure system). The unique characteristics that exist within the IHC point towards landslide disaster risk reduction. In general, the UHC indiscriminately destroy the hills. They lack local knowledge and fail to adapt to the hilly environment. Even though they enjoy higher economic status, utility facilities, community services, landslide shelters and early warnings, the UHC tend to be more vulnerable to landslides. Now, on the basis of the considerations reported above (to be elaborated and expanded more throughout the thesis), the following hypothesis will be tested in this research:

Hypothesis: The indigenous tribal communities are resilient to landslides in comparison to the urbanized hill communities in the Chittagong Hill Districts.

Context is important in DRR studies. Vulnerability can respond to particular contexts and cultural environments (Ayala 2002; Füssel 2007). The context of this research is set to analyse the communities living on the hills of CHD in Bangladesh and the physical, social, economic, ecological, institutional and cultural aspects of vulnerability at community level will be analysed.

1.4. Research Aim and Objective

The aim of this research is to understand the root causes of the vulnerability of the communities living with landslide risks in the Chittagong Hill Districts of Bangladesh. Within this context, the specific objective is to answer the following research questions:

- (a) Who are vulnerable to landslides in the Chittagong hill districts?
- (b) What makes the communities vulnerable or resilient to landslides?
- (c) Why are people living on the risky hill slopes?
- (d) Can the cultural dimension of community vulnerability override the economic dimension?
- (e) Is it possible to incorporate cultural knowledge into landslide DRR?

In recent years, the paradigm of DRR studies has moved from focusing only on natural hazard-related engineering and technical solutions to giving importance to societal issues (Pelling 2003; Wisner et al. 2004). It is argued that vulnerability is related to poverty (Schneiderbauer and Ehrlich 2006), but meticulous emphasis should be given to cross-cultural vulnerability assessment and incorporating indigenous knowledge in DRR (Alexander 2000; UNISDR 2008; Hewitt 2009; Mercer et al. 2010). This thesis concentrates on the cultural make up of a community and its risk perception concerning landslides.

Community vulnerability to environmental hazards can have multiple dimensions such as economic, social, institutional, cultural, and ecological etc. This thesis argues that a community with inherited indigenous knowledge (i.e. cultural community) can tackle the adverse impacts of landslides than the urbanized hill communities who enjoy more economic and social benefits.

1.5. Originality and New Knowledge

Bangladesh is one of the most disaster-prone countries of the world. Landslide disaster is an emerging threat at the national scale fuelled by the impacts of increased frequency of extreme precipitation, population pressure and higher density in flat lands, high rates of urbanization and deforestation, and lack of cultural knowledge (Kelman 2015; Ahmed and Dewan 2017). Yet there has been limited research activity on landslides in Bangladesh. Considering the local context and limitations, conducting research on landslide DRR issues in Bangladesh is imperative and timely.

This research is based on primary data collection at community level, and all the analytical figures or diagrams and tables are original. The research activity included reconnaissance surveying, the construction of landslide inventories (Appendix-II), landslide susceptibility mapping, detailed community-based questionnaires (Appendix-III), stakeholder and expert opinion surveys (Appendix-IV), and participatory surveying. To achieve the aims and objectives of the research and answer the research questions, the work incorporates both qualitative (participatory) and quantitative (questionnaire) methods. The hypothesis testing and answers to the research questions will allow one to

compare the socio-economic and socio-cultural vulnerability of the two different groups (UHC vs. IHC) that live on the landslide-prone hilly areas in the Chittagong Hill Districts. This kind of research has never been conducted in Bangladesh, and a comparison of the urbanized and indigenous communities living in the same regional or environmental setup is unique.

At the local scale, the outcome of this research allows one to understand how a particular community deals with extreme hazards in the hilly environment. At the national scale, this research promotes awareness of landslide studies by incorporating landslide hazard maps into the gazetted urban master plans and traditional cultural knowledge in landslide DRR initiatives. In order to control hill cutting and deforestation, it encourages the adoption of stricter land-use regulations. At the global and regional scales, this research helps one to understand the root causes of disasters and the characteristics that make a particular community vulnerable or resilient. It is intended that the attempts undertaken in this research to scrutinize the various components of landslide disasters will contribute to the generation of new knowledge by advancing the current trends of DRR studies on community vulnerability and resilience, and cultures and disasters.

1.6. Structure of the Thesis

Figure 1.12 illustrates the structure and inter-connectivity of different chapters of this thesis. Chapter 1 of this thesis presents the background of landslide disasters from global to local scale and the prerequisite of conducting a landslide DRR study in Bangladesh. The geographic focus is identified as the Chittagong hill districts (CHD). Chapter 1 also outlines the research aim, objective and research questions. Chapter 2 is a literature review that explains the DRR terminologies used, examines the various frameworks, social levels and dimensions of vulnerability, and the significance of culture and indigenous knowledge, a mixed methods research and community participatory approach in DRR studies. Chapter 3 sets the fundamental methodology of this thesis. Chapter 4 describes the various aspects related to landslides in Chittagong hill districts.

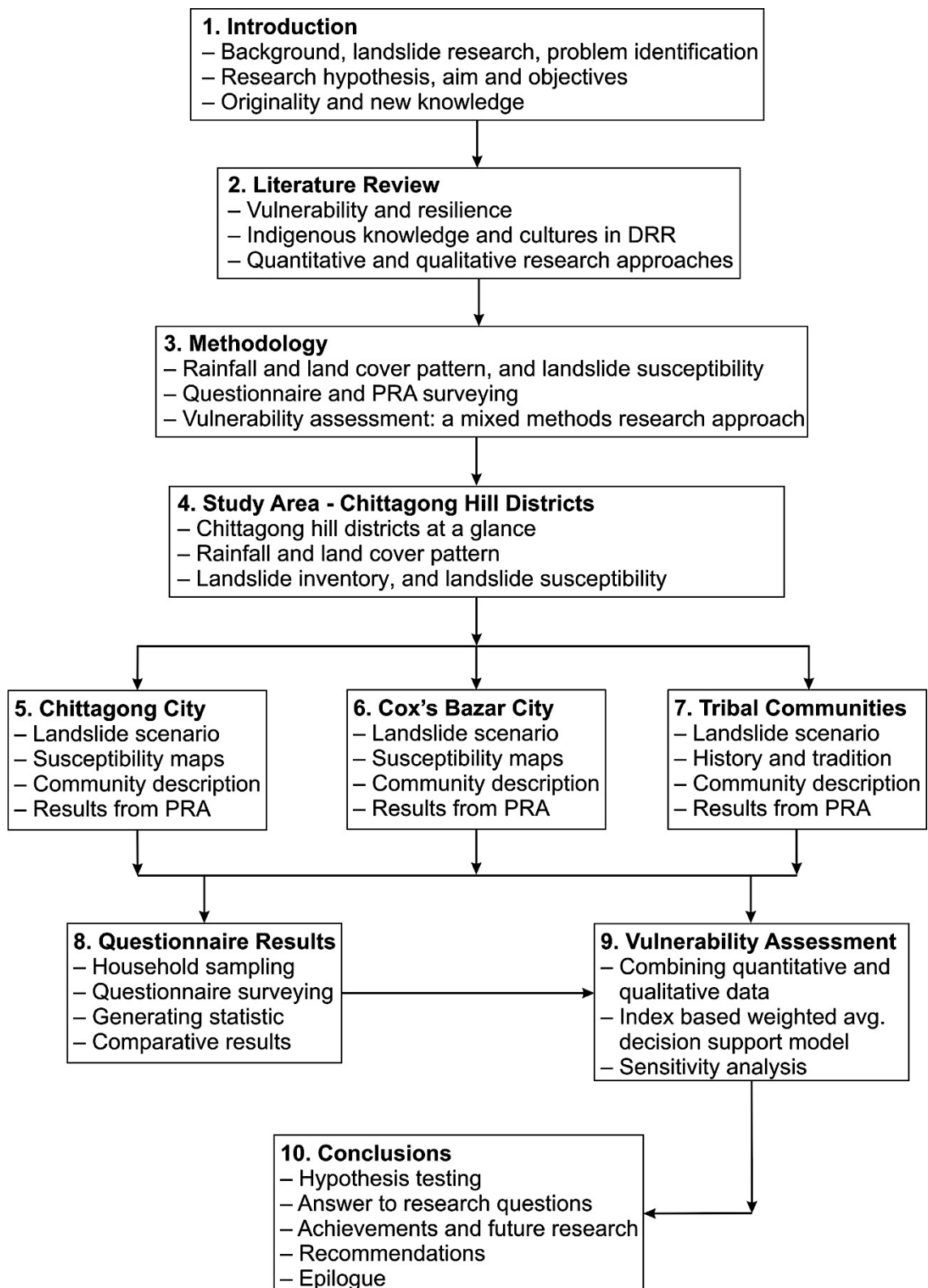


Figure 1.12. Thesis map.

Chapter 5, 6 and 7 describe the Chittagong city corporation, Cox's Bazar municipality, and the indigenous hill communities respectively. They cover the community selection procedure and the detailed results from the community participatory surveying. Chapter 8 presents the results obtained from household

questionnaire surveys of all the communities. In order to understand the similarities and differences, it compares the results. Chapter 9 applies a method for combining quantitative and qualitative data to assess and compare the overall community vulnerability. Chapter 10 is the conclusion. It presents the answers to the research questions, justifies the results and explains the root-causes of community vulnerability to landslides in Bangladesh. It ends by explaining the achievements and contribution of this study, overall landslide vulnerability scenario in the CHD, and future research and policy guidelines or recommendations to accelerate landslide DRR at local level in Bangladesh.

In summary, landslides are a serious threat for the millions of people living in the hilly region of CHD considering the rate of population growth and urbanization, availability of flat lands and resources for the marginalized people, extensive level of hill cutting and deforestation, absence of land use plan integration in DRR; politics, policy and governance, and absence of cultural knowledge in dealing with the extreme climate and natural hazards in the hills. With this background, conducting research on landslides in CHD by focusing on community vulnerability sets the agenda for the first time in Bangladesh.

In the next chapter (Chapter 2), the theoretical framework of this thesis is discussed.

The full text is not uploaded due to copyright reasons. The hard copy is available at the UCL Library. The complete PhD thesis in PDF file will be uploaded in ResearchGate in September 2019. Please email me [bayes.ahmed@ucl.ac.uk] for further queries.

References

- Adger, W.N., 2006. Vulnerability. *Global environmental change*, 16(3), pp.268-281.
- Adger, W.N., Dessai, S., Goulden, M., Hulme, M., Lorenzoni, I., Nelson, D.R., Naess, L.O., Wolf, J. and Wreford, A., 2009. Are there social limits to adaptation to climate change?. *Climatic change*, 93(3), pp.335-354.
- Agresti, A., 2007. *An introduction to categorical data analysis*, New York: John Wiley & Sons.
- Ahammad, R. and Stacey, N., 2016. Forest and agrarian change in the Chittagong Hill Tracts region of Bangladesh. *Agrarian change in tropical landscapes*, p.190. Center for International Forestry Research, Bogor, Indonesia. DOI: 10.17528/cifor/005867
- Ahmed, B; Rubel, YA; (2013) *Understanding the issues involved in urban landslide vulnerability in Chittagong metropolitan area, Bangladesh*. Association of American Geographers (AAG): Washington DC, USA. URL: <https://sites.google.com/a/aag.org/mycoe-servirglobal/final-arafat>, accessed on 16 December 2016.
- Ahmed, B. and Ahmed, R., 2012. Modeling urban land cover growth dynamics using multi-temporal satellite images: a case study of Dhaka, Bangladesh. *ISPRS International Journal of Geo-Information*, 1(1), pp.3-31.
- Ahmed, B. and Dewan, A., 2017. Application of Bivariate and Multivariate Statistical Techniques in Landslide Susceptibility Modeling in Chittagong City Corporation, Bangladesh. *Remote Sensing*, 9(4), 304.
- Ahmed, B., 2011. *Urban land cover change detection analysis and modeling spatio-temporal Growth dynamics using Remote Sensing and GIS Techniques: A case study of Dhaka, Bangladesh*. MSc dissertation. [Accessed 16 January 2017]. Available from: <https://run.unl.pt/handle/10362/8298>
- Ahmed, B., 2015a. Landslide susceptibility mapping using multi-criteria evaluation techniques in Chittagong Metropolitan Area, Bangladesh. *Landslides*, 12(6), pp.1077-1095.
- Ahmed, B., 2015b. Landslide susceptibility modelling applying user-defined weighting and data-driven statistical techniques in Cox's Bazar Municipality, Bangladesh. *Natural Hazards*, 79(3), pp.1707-1737.

- Ahmed, B., 2015c. *Rainfall Pattern Modeling Report*. BUET-Japan Institute of Disaster Prevention and Urban Safety (BUET-JIDPUS), Bangladesh University of Engineering and Technology (BUET). [Accessed 14 December 2016]. Available from: <http://www.landslidebd.com/reports/>
- Ahmed, B., 2017. [Forthcoming]. Who takes responsibility for the climate refugees? *International Journal of Climate Change Strategies and Management*.
- Ahmed, B., Ahmed, R. and Zhu, X., 2013. Evaluation of model validation techniques in land cover dynamics. *ISPRS International Journal of Geo-Information*, 2(3), pp.577-597.
- Ahmed, B., and Forte, R. 2016. Landslide Risk Zoning Applying Kohonen's Self-Organizing Map Neural Network Technique. Paper ID: 404, presented at the 1st Bangladesh Planning Research Conference (BPRC), Department of Urban & Regional Planning Jahangirnagar University, Dhaka 1342, Bangladesh. DOI: 10.13140/RG.2.1.2748.7766/1
- Ahmed, B., Kamruzzaman, M., Zhu, X., Rahman, M.S. and Choi, K., 2013. Simulating land cover changes and their impacts on land surface temperature in Dhaka, Bangladesh. *Remote Sensing*, 5(11), pp.5969-5998.
- Ahmed, B., Kelman, I., Fehr, H.K. and Saha, M., 2016. Community Resilience to Cyclone Disasters in Coastal Bangladesh. *Sustainability*, 8(8), p.805.
- Ahmed, B., Rahman, M.S., Rahman, S., Huq, F.F., Ara, S., 2014. *Landslide Inventory Report*. BUET-Japan Institute of Disaster Prevention and Urban Safety (BUET-JIDPUS); Bangladesh University of Engineering and Technology (BUET), Dhaka, Bangladesh. [Accessed 9 April 2016]. Available from: <http://www.landslidebd.com/reports/>
- Ainuddin, S., Routray, J.K. and Ainuddin, S., 2015. Operational indicators for assessing vulnerability and resilience in the context of natural hazards and disasters. *International Journal of Risk Assessment and Management*, 18(1), pp.66-88.
- Akgun, A., 2012. A comparison of landslide susceptibility maps produced by logistic regression, multi-criteria decision, and likelihood ratio methods: a case study at İzmir, Turkey. *Landslides*, 9(1), pp.93-106.
- Akter, S. and Mallick, B., 2013. The poverty–vulnerability–resilience nexus: Evidence from Bangladesh. *Ecological Economics*, 96, pp.114-124.

- Alam, B. 2012. Cox's Bazar Sadar Upazila. [Online]. In: Islam N (ed) Banglapedia, National Encyclopaedia of Bangladesh, 2nd edn. Banglapedia Trust, Asiatic Society of Bangladesh, Dhaka, Bangladesh. [Accessed 17 June 2016]. Available from: http://en.banglapedia.org/index.php?title=Cox%E2%80%99s_Bazar_Sadar_Upazila
- Alcántara-Ayala, I., 2002. Geomorphology, natural hazards, vulnerability and prevention of natural disasters in developing countries. *Geomorphology*, 47(2), pp.107-124.
- Alcántara-Ayala, I., Esteban-Chávez, O. and Parrot, J.F., 2006. Landsliding related to land-cover change: A diachronic analysis of hillslope instability distribution in the Sierra Norte, Puebla, Mexico. *Catena*, 65(2), pp.152-165.
- Alessa, L., Kliskey, A., Lammers, R., Arp, C., White, D., Hinzman, L. and Busey, R., 2008. The arctic water resource vulnerability index: an integrated assessment tool for community resilience and vulnerability with respect to freshwater. *Environmental management*, 42(3), p.523.
- Alexander, D. 2000. *Confronting catastrophe: New perspectives on natural disasters*. England: Terra Publishing.
- Alexander, D. 2005. Vulnerability to Landslides. In: Glade, T., Anderson, M., and Crozier, M.J. ed(s). *Landslide Hazard and Risk*. England: John Wiley & Sons, 175-198.
- Alexander, D. 2016. *How to write an emergency plan*. London: Dunedin Academic Press.
- Alexander, D., 1989. Urban landslides. *Progress in Physical Geography*, 13(2), pp.157-189.
- Alexander, D., 1991. Information technology in real-time for monitoring and managing natural disasters. *Progress in Physical Geography*, 15(3), pp.238-260.
- Alexander, D., 2012. Models of social vulnerability to disasters. *RCCS Annual Review*. 4(4), pp.22-40.
- Alexander, D.E. 2002. *Principles of emergency planning and management*. England: Dunedin Academic Press.
- Alexander, D.E. 2016. 'Optimising' Failure in Disaster Response. 15 December. *Disaster Planning and Emergency Management*. [Online]. [Accessed 27

- March 2017]. Available from: <http://emergency-planning.blogspot.co.uk/2016/12/optimising-failure-in-disaster-response.html>
- Alexander, D.E. 2017. The Importance of Context in Disaster Risk Reduction. 27 February. *Disaster Planning and Emergency Management*. [Online]. [Accessed 25 March 2017]. Available from: <http://emergency-planning.blogspot.co.uk/2017/02/the-importance-of-context-in-disaster.html>
- Alexander, D.E., 1993, *Natural Disasters*, Boca Raton: CRC Press.
- Alexander, D.E., 2004. Cognitive mapping as an emergency management training exercise. *Journal of contingencies and crisis management*, 12(4), pp.150-159.
- Alexander, D.E., 2005. *The Italian mafia's legacy of high-rise death traps*. Global Corruption Report, Transparency International, Pluto Press: London, pp.26–27.
- Alexander, D.E., 2008. A brief survey of GIS in mass-movement studies, with reflections on theory and methods. *Geomorphology*, 94(3), pp.261-267.
- Alexander, D.E., 2013. Resilience and disaster risk reduction: an etymological journey. *Natural Hazards and Earth System Sciences*, 13(11), pp.2707-2716.
- Ali, M., Emch, M., Von Seidlein, L., Yunus, M., Sack, D.A., Rao, M., Holmgren, J. and Clemens, J.D., 2005. Herd immunity conferred by killed oral cholera vaccines in Bangladesh: a reanalysis. *The Lancet*, 366(9479), pp.44-49.
- Anderson, M.G., Holcombe, E., Holm-Nielsen, N. and Della Monica, R., 2013. What are the emerging challenges for community-based landslide risk reduction in developing countries?. *Natural Hazards Review*, 15(2), pp.128-139.
- Antwi, E.K., Boakye-Danquah, J., Owusu, A.B., Loh, S.K., Mensah, R., Boafo, Y.A. and Apronti, P.T., 2015. Community vulnerability assessment index for flood prone savannah agro-ecological zone: a case study of Wa West District, Ghana. *Weather and Climate Extremes*, 10, pp.56-69.
- ArcGIS® 10 Help. 2012. Environmental Systems Research Institute (ESRI). Redlands, CA, USA. [Software]. [Accessed 7 November 2015]. Available from: <http://help.arcgis.com/en/arcgisdesktop/10.0/help/>
- Aydi, A., Zairi, M. and Dhia, H.B., 2013. Minimization of environmental risk of landfill site using fuzzy logic, analytical hierarchy process, and weighted linear combination methodology in a geographic information system environment. *Environmental earth sciences*, 68(5), pp.1375-1389.

- Bankoff, G., Frerks, G. and Hilhorst, D., 2004. *Mapping vulnerability: disasters, development, and people*. Routledge.
- BBS. 2010. *Statistical Year Book Bangladesh 2010*. Chapter 2: Area Population Household and Household characteristics. Statistics and Informatics Division (SID), Ministry of Planning, Bangladesh Bureau of Statistics (BBS), Dhaka, Government of the People's Republic of Bangladesh.
- BBS. 2013. *District Statistics 2011*. Bangladesh Bureau of Statistics (BBS), Statistics and Informatics Division, Ministry of Planning, Dhaka, Government of the People's Republic of Bangladesh. URL: <http://www.bbs.gov.bd/>; assessed on 28 March 2015.
- BBS. 2014. *Bangladesh Population and Housing Census 2011, National Report: Volume- 3, Urban Area Report*. Bangladesh Bureau of Statistics (BBS), Statistics and Informatics Division, Ministry of Planning, Government of the People's Republic of Bangladesh.
- BBS. 2015. *Population Distribution and Internal Migration in Bangladesh*. Statistics and Informatics Division (SID), Ministry of Planning, Bangladesh Bureau of Statistics (BBS), Dhaka, Government of the People's Republic of Bangladesh.
- BBS. 2016. *Statistical Year Book Bangladesh 2015*. Statistics and Informatics Division (SID), Ministry of Planning, Bangladesh Bureau of Statistics (BBS), Dhaka, Government of the People's Republic of Bangladesh. URL: <http://www.bbs.gov.bd/> (accessed on 23 August 2016).
- Bell, R. and Glade, T., 2004. Quantitative risk analysis for landslides? Examples from BÍldudalur, NW-Iceland. *Natural Hazards and Earth System Science*, 4(1), pp.117-131.
- Bhatta, L.D., van Oort, B.E.H., Stork, N.E. and Baral, H., 2015. Ecosystem services and livelihoods in a changing climate: Understanding local adaptations in the Upper Koshi, Nepal. *International Journal of Biodiversity Science, Ecosystem Services & Management*, 11(2), pp.145-155.
- Birkmann, J. 2006. *Measuring vulnerability to natural hazards: Towards disaster resilient societies*. Tokyo: United Nations University Press.
- Birkmann, J. and Fernando, N., 2008. Measuring revealed and emergent vulnerabilities of coastal communities to tsunami in Sri Lanka. *Disasters*, 32(1), pp.82-105.

- Birkmann, J., Cardona, O.D., Carreño, M.L., Barbat, A.H., Pelling, M., Schneiderbauer, S., Kienberger, S., Keiler, M., Alexander, D., Zeil, P. and Welle, T., 2013. Framing vulnerability, risk and societal responses: the MOVE framework. *Natural hazards*, 67(2), pp.193-211.
- Bogoslovskaya, L., Vrosky, N., Knyazeva, S., Krupnik, I. and Murashko, O. 2017. Indigenous Peoples of the North: Traditional Culture and Knowledge for the Environment. The UNESCO Institute for Information Technologies in Education (UNESCO IITE). [Accessed 6 April 2017]. Available from: http://iite.unesco.org/courses/climate_change/en/indigenous_peoples_north.html
- Bohle, H.G., 2001. Vulnerability and criticality: perspectives from social geography. *IHDP update*, 2(01), pp.3-5.
- Bohle, H.G., Downing, T.E. and Watts, M.J., 1994. Climate change and social vulnerability: toward a sociology and geography of food insecurity. *Global environmental change*, 4(1), pp.37-48.
- Bollin, C. and Hidajat, R. 2006. Community-based risk index: Pilot implementation in Indonesia. In: Birkmann, J. ed. *Measuring vulnerability to natural hazards: Towards disaster resilient societies*. New Delhi: TERI Press, pp.271-289.
- Brammer, H. 1986. *Reconnaissance Soil and Land Use Survey: Chittagong Hill Tracts (1964-1965)*. Soil Resources Development Institute, Ministry of Agriculture, Dhaka, Government of the People's Republic of Bangladesh.
- Brammer, H. 2012. *The Physical Geography of Bangladesh*. Dhaka, Bangladesh: The University Press Limited.
- Brammer, H., 1987. Drought in Bangladesh: lessons for planners and administrators. *Disasters*, 11(1), pp.21-29.
- Brouwer, R., Akter, S., Brander, L., & Haque, E. (2007). Socioeconomic vulnerability and adaptation to environmental risk: a case study of climate change and flooding in Bangladesh. *Risk Analysis*, 27(2), 313-326.
- Bryman, A. 2016. *Social Research Methods*. Oxford: Oxford University Press
- BUET-JIDPUS. 2015. *Developing a Dynamic Web-GIS based Early Warning System for the Communities Living with Landslide Risks in Chittagong Metropolitan Area, Bangladesh*. BUET-Japan Institute of Disaster Prevention and Urban Safety (BUET-JIDPUS), Bangladesh University of Engineering

- and Technology (BUET), Dhaka, Bangladesh. [Accessed 18 December 2016]. Available from: <http://www.landslidebd.com/reports/>
- Bündnis Entwicklung Hilft (BEH) and United Nations University – EHS (UNU-EHS). 2016. *World Risk Report 2016*. Berlin, Germany.
- Burg, J., 2008. Measuring populations' vulnerabilities for famine and food security interventions: the case of Ethiopia's Chronic Vulnerability Index. *Disasters*, 32(4), pp.609-630.
- Cannon, T., 2008. *Reducing people's vulnerability to natural hazards communities and resilience* (Research Paper No. 2008/34). UNU World Institute for Development Economics Research (UNU-WIDER), Helsinki, Finland.
- Cannon, T., 2014. Why do we pretend there is 'community'? Problems of community-based adaptation (CBA) and community based disaster risk reduction (CBDRR). *Institute for Development Studies (IDS), UK*. [Accessed 24 March 2017]. Available from: <http://vulnerabilityandpoverty.blogspot.co.uk/2014/04/why-do-we-pretend-there-is-community.html>
- Cardona, O.D., van Aalst, M.K., Birkmann, J., Fordham, M., McGregor, G. and Mechler, R., 2012. Determinants of risk: exposure and vulnerability. In: *Managing the Risks of Extreme Events and Disasters to Advance Climate Change Adaptation. A Special Report of Working Groups I and II of the Intergovernmental Panel on Climate Change (IPCC)*. Cambridge University Press, Cambridge, UK, and New York, NY, USA, 65-108 pp.
- Carrara, A., Guzzetti, F., Cardinali, M. and Reichenbach, P., 1999. Use of GIS technology in the prediction and monitoring of landslide hazard. *Natural hazards*, 20(2-3), pp.117-135.
- CDMP-II. 2012. *Landslide Inventory and Land-use Mapping, DEM Preparation, Precipitation Threshold Value and Establishment of Early Warning Devices*. Comprehensive Disaster Management Programme-II (CDMP-II), Ministry of Food and Disaster Management, Disaster Management and Relief Division, Government of the People's Republic of Bangladesh.
- Chambers, R., 1994. The origins and practice of participatory rural appraisal. *World development*, 22(7), pp.953-969.
- Chambers, R., 1998. Beyond "Whose reality counts?" New methods we now need? 1. *Studies in Cultures, organizations and Societies*, 4(2), pp.279-301.

- Chapagai, D., 2011. Landslide problem of South Asia and vis-a-vis Global Scenario. *SAARC training program on landslide risk management in South Asia, SAARC Disaster Management Centre (SDMC), New Delhi.*
- Chauhan, S., Sharma, M., Arora, M.K. and Gupta, N.K., 2010. Landslide susceptibility zonation through ratings derived from artificial neural network. *International Journal of Applied Earth Observation and Geoinformation*, 12(5), pp.340-350.
- Chisty, K.U., 2014. Landslide in Chittagong City: A Perspective on Hill Cutting. *Journal of Bangladesh Institute of Planners*. 7, pp.1–17.
- Chowdhury, S.Q., 2015. *Chittagong Hill Tracts*. Banglapedia, National Encyclopaedia of Bangladesh. Asiatic Society of Bangladesh. [Accessed 12 January 2017]. Available from: http://en.banglapedia.org/index.php?title=Chittagong_Hill_Tracts;
- Climate Frontlines. 2010. *Zambia's poor farmers hit by climate change*. [Accessed 4 April 2017]. Available from: <http://climatefrontlines.org/content/zambia%E2%80%99s-poor-farmers-hit-climate-change-0>
- Comprehensive Disaster Management Programme (CDMP). 2009. *Engineering Geological Mapping of Dhaka, Chittagong and Sylhet City Corporation Area of Bangladesh*. Ministry of Food and Disaster Management, Government of the People's Republic of Bangladesh: Dhaka, Bangladesh.
- Cooke, B. and Kothari, U. eds., 2001. *Participation: The new tyranny?*. London: Zed books.
- Couture, R., 2011. *Landslide Terminology: National Technical Guidelines and Best Practices on Landslides*. Geological Survey of Canada, Open File 6824, [Accessed 8 July 2014]. DOI: 10.4095/288066.
- Cramér, H. 1999. *Methods of estimation*. In *Mathematical Methods of Statistics*, 19th ed.; Chapter 33; NJ, USA: Princeton University Press: Princeton, pp. 497-506.
- Cruden, D.; VanDine, D.F. 2013. *Classification, Description, Causes and Indirect Effects—Canadian Technical Guidelines and Best Practices Related to Landslides: A National Initiative for Loss Reduction*. Geological Survey of Canada, Open File 7359; Natural Resources Canada: Ottawa, ON, Canada.
- Cruden, D.M., Varnes, D.J., 1996. *Landslide types and processes*. In: Turner, A.K., and Schuster, R.L., (Eds.), *Landslides, Investigation and Mitigation*.

- Transportation Research Board, Special Report 247, Washington D.C., USA, pp. 36-75.
- Cummins, P.R., 2007. The potential for giant tsunamigenic earthquakes in the northern Bay of Bengal. *Nature*, 449(7158), pp.75-78.
- Cutter, S.L., 1996. Vulnerability to environmental hazards. *Progress in human geography*, 20(4), pp.529-539.
- Cutter, S.L., Barnes, L., Berry, M., Burton, C., Evans, E., Tate, E. and Webb, J., 2008. A place-based model for understanding community resilience to natural disasters. *Global environmental change*, 18(4), pp.598-606.
- Cutter, S.L., Boruff, B.J. and Shirley, W.L., 2003. Social vulnerability to environmental hazards. *Social science quarterly*, 84(2), pp.242-261.
- DAP. 2009. *The detailed area plan (DAP)*. Chittagong Development Authority, Chittagong, Bangladesh. [Accessed 16 December 2016]. Available from: <http://cda.gov.bd/starting-pages/>
- Devkota, K.C., Regmi, A.D., Pourghasemi, H.R., Yoshida, K., Pradhan, B., Ryu, I.C., Dhital, M.R. and Althuwaynee, O.F., 2013. Landslide susceptibility mapping using certainty factor, index of entropy and logistic regression models in GIS and their comparison at Mugling–Narayanghat road section in Nepal Himalaya. *Natural hazards*, 65(1), pp.135-165.
- Dow, K., Berkhout, F., Preston, B.L., Klein, R.J., Midgley, G. and Shaw, M.R., 2013. Limits to adaptation. *Nature Climate Change*, 3(4), pp.305-307.
- Eastman, R. 2012. *IDRISI Selva Help System*. [Software]. Worcester: Clark Labs, Clark University.
- Ebert, A., Kerle, N. and Stein, A., 2009. Urban social vulnerability assessment with physical proxies and spatial metrics derived from air-and spaceborne imagery and GIS data. *Natural hazards*, 48(2), pp.275-294.
- Eidsvig, U.M., McLean, A., Vangelsten, B.V., Kalsnes, B., Ciurean, R.L., Argyroudis, S., Winter, M.G., Mavrouli, O.C., Fotopoulou, S., Pitilakis, K. and Baills, A., 2014. Assessment of socioeconomic vulnerability to landslides using an indicator-based approach: methodology and case studies. *Bulletin of engineering geology and the environment*, 73(2), pp.307-324.
- Etkin, D., 1999. Risk transference and related trends: driving forces towards more mega-disasters. *Global Environmental Change Part B: Environmental Hazards*, 1(2), pp.69-75.

- Felicísimo, Á.M., Cuartero, A., Remondo, J. and Quirós, E., 2013. Mapping landslide susceptibility with logistic regression, multiple adaptive regression splines, classification and regression trees, and maximum entropy methods: a comparative study. *Landslides*, 10(2), pp.175-189.
- Food and Agriculture Organization (FAO). 2003. *Soil: Soil Consistency* (Chapter 8). Simple Methods for Aquaculture. Manuals Form the FAO Training Series. [Accessed 14 February 2017] Available from: ftp://ftp.fao.org/fi/cdrom/fao_training/FAO_Training/General/x6706e/x6706e08.htm#top
- Füssel, H.M., 2007. Vulnerability: a generally applicable conceptual framework for climate change research. *Global environmental change*, 17(2), pp.155-167.
- Gaillard, J.C., 2007. Resilience of traditional societies in facing natural hazards. *Disaster Prevention and Management: An International Journal*, 16(4), pp.522-544.
- Gaillard, J.C., 2010. Vulnerability, capacity and resilience: perspectives for climate and development policy. *Journal of International Development*, 22(2), pp.218-232.
- Gaillard, J.C., Clavé, E., Vibert, O., Denain, J.C., Efendi, Y., Grancher, D., Liamzon, C.C., Sari, D.R. and Setiawan, R., 2008. Ethnic groups' response to the 26 December 2004 earthquake and tsunami in Aceh, Indonesia. *Natural Hazards*, 47(1), pp.17-38.
- García-Ruiz, J.M., Beguería, S., Alatorre, L.C. and Puigdefábregas, J., 2010. Land cover changes and shallow landsliding in the flysch sector of the Spanish Pyrenees. *Geomorphology*, 124(3), pp.250-259.
- Garcia-Urquia, E., 2016. Establishing rainfall frequency contour lines as thresholds for rainfall-induced landslides in Tegucigalpa, Honduras, 1980–2005. *Natural Hazards*, 82(3), pp.2107-2132.
- Gbetibouo, G.A., Ringler, C. and Hassan, R., 2010, August. Vulnerability of the South African farming sector to climate change and variability: An indicator approach. In *Natural Resources Forum* (Vol. 34, No. 3, pp. 175-187). Blackwell Publishing Ltd.
- Gerlitz, J.Y., Macchi, M., Brooks, N., Pandey, R., Banerjee, S. and Jha, S.K., 2017. The Multidimensional Livelihood Vulnerability Index—an instrument to

- measure livelihood vulnerability to change in the Hindu Kush Himalayas. *Climate and Development*, 9(2), pp.124-140.
- Glade, T., 2003. Landslide occurrence as a response to land use change: a review of evidence from New Zealand. *Catena*, 51(3), pp.297-314.
- Glade, T., 2003. Vulnerability assessment in landslide risk analysis. *Erde*, 134(2), pp.123-146.
- GoB. 1990. *The Building Construction (Amendment) Ordinance 1990*. The Building Construction Act, 1952 (E.B Act no II of 1953) as amended by the Act No. XXXVI of 1990. Government of the People's Republic of Bangladesh (GoB), Legislative and Parliamentary Affairs Division, Ministry of Law, Justice and Parliamentary Affairs, Bangladesh Secretariat, Dhaka, Bangladesh: 83-96 pp.
- GoB. 2010. *The Bangladesh Environment Conservation (Amended) Act 2010*. Bangladesh Gazette, Bangladesh National Parliament, Government of the People's Republic of Bangladesh (GoB), Bangladesh Government Press, Tejgaon, Dhaka, Bangladesh: 9125-9132 pp.
- Guzzetti, F., Carrara, A., Cardinali, M. and Reichenbach, P., 1999. Landslide hazard evaluation: a review of current techniques and their application in a multi-scale study, Central Italy. *Geomorphology*, 31(1), pp.181-216.
- Habiba, U. and Shaw, R., 2012. Chapter 6 Bangladesh Experiences of Community-Based Disaster Risk Reduction. In *Community-based disaster risk reduction* (pp. 91-111). Emerald Group Publishing Limited.
- Hahn, M.B., Riederer, A.M. and Foster, S.O., 2009. The Livelihood Vulnerability Index: A pragmatic approach to assessing risks from climate variability and change—A case study in Mozambique. *Global Environmental Change*, 19(1), pp.74-88.
- Harmsworth, G. and Raynor, B. 2005. *Cultural consideration in landslide risk perception*. Glade, T., Anderson, M. and Crozier, M. (eds.), John Wiley and Sons, Chichester, England, pp. 219-249.
- Hashizume, M., Wagatsuma, Y., Faruque, A.S., Hayashi, T., Hunter, P.R., Armstrong, B. and Sack, D.A., 2008. Factors determining vulnerability to diarrhoea during and after severe floods in Bangladesh. *Journal of Water and Health*, 6(3), pp.323-332.

- Hewitt, K., 1983. *The idea of calamity in a technocratic age*. In K. Hewitt (eds.), *Interpretations of calamity from the viewpoint of human ecology*, pp. 3-32, Winchester: Allen & Unwin Inc.
- Hewitt, K., 2009. *Culture and risk: Understanding the sociocultural settings that influence risk from natural hazards*. Synthesis Report from a Global E-Conference organised by ICIMOD and facilitated by the Mountain Forum. International Centre for Integrated Mountain Development (ICIMOD), Nepal.
- Hewitt, K., 2012. Culture, hazard and disaster. *The Routledge Handbook of Hazards and Disaster Risk Reduction*. Wisner, B., Gaillard, J.C. and Kelman, I (eds), London: Routledge, pp.85-96.
- Highland, L.M., Bobrowsky, P., 2008, The landslide handbook—A guide to understanding landslides: Reston, Virginia, U.S. Geological Survey Circular 1325. [Accessed 26 December 2016]. Available from: <http://pubs.usgs.gov/circ/1325/>,
- Hiwasaki, L., Luna, E. and Shaw, R., 2014. Process for integrating local and indigenous knowledge with science for hydro-meteorological disaster risk reduction and climate change adaptation in coastal and small island communities. *International journal of disaster risk reduction*, 10, pp.15-27.
- Holand, I.S., Lujala, P. and Rød, J.K., 2011. Social vulnerability assessment for Norway: a quantitative approach. *Norsk Geografisk Tidsskrift-Norwegian Journal of Geography*, 65(1), pp.1-17.
- Hufschmidt, G., 2011. A comparative analysis of several vulnerability concepts. *Natural Hazards*, 58(2), pp.621-643.
- Huggel, C., Clague, J.J. and Korup, O., 2012. Is climate change responsible for changing landslide activity in high mountains?. *Earth Surface Processes and Landforms*, 37(1), pp.77-91.
- Hulme, M., 2016. 1.5°C and climate research after the Paris Agreement. *Nature Climate Change*, 6(3), pp.222-224.
- Hyogo Framework for Action 2005-2015. 2007. Building the Resilience of Nations and Communities to Disasters United Nations International Strategy for Disaster Reduction (UNISDR), Geneva, Switzerland.
- ICIMOD. (2015). *International efforts to identify post-quake hazards*. International Centre for Integrated Mountain Development (ICIMOD), Kathmandu, Nepal. [Accessed 16 December 2016]. Available from: <http://www.icimod.org/?q=18072>

- International Federation of Red Cross and Red Crescent Societies (IFRC). 2015. *World Disasters Report 2015: Focus on local actors, the key to humanitarian effectiveness*. IFRC: Geneva, Switzerland.
- International Federation of Red Cross and Red Crescent Societies (IFRC). 2014. *IFRC Framework for Community Resilience*. Geneva, Switzerland.
- International Labour Organization (ILO). 2016. Ratifications of C169 - Indigenous and Tribal Peoples Convention, 1989 (No. 169). Genève, Switzerland. (Accessed 18 April 2017). Available from: http://www.ilo.org/dyn/normlex/en/f?p=1000:11300:0::NO:11300:P11300_INSTRUMENT_ID:312314
- International Strategy for Disaster Reduction (UNISDR), 2004. *Living with risk: A global review of disaster reduction initiatives* (Vol. 1). United Nations Publications, Geneva, Switzerland.
- IPCC. 2012. *Managing the Risks of Extreme Events and Disasters to Advance Climate Change Adaptation*. Seneviratne, S.I., Nicholls, N., Easterling, D., Goodess, C., Kanae, S., Kossin, J., Luo, Y., Marengo, J., McInnes, K., Rahimi, M. and Reichstein, M., 2012. Managing the risks of extreme events and disasters to advance climate change adaptation a special report of Working Groups I and II of the Intergovernmental Panel on Climate Change (IPCC).
- IPCC. 2014. *Climate Change 2014: Synthesis Report*. Contribution of Working Groups I, II and III to the Fifth Assessment Report of the Intergovernmental Panel on Climate Change (IPCC), Geneva, Switzerland.
- Islam, T. and Peterson, R.E., 2009. Climatology of landfalling tropical cyclones in Bangladesh 1877–2003. *Natural Hazards*, 48(1), pp.115-135.
- Jogia, J., Kulatunga, U., Yates, G.P. and Wedawatta, G., 2014. Culture and the psychological impacts of natural disasters: Implications for disaster management and disaster mental health. *Built and Human Environment Review*, 7(1), pp.1-10.
- Kader, R. 2015. *Shanti Bahini*. Banglapedia: National Encyclopaedia of Bangladesh. The Asiatic Society of Bangladesh: Dhaka. [Accessed 2 October 2016]. Available from: http://en.banglapedia.org/index.php?title=Shanti_Bahini

- Kafle, S.K. and Murshed, Z., 2006. *Community-based disaster risk management for local authorities. Participant's workbook*. Asian Disaster Preparedness Center (ADPC), Bangkok: Thailand.
- Karim, M.F., Kamal, A.S.M.M., Hassan, M.Q., Khadiza, U., Serajee, F., Rahman, M.Z., Siddiqua, S., 2015. Geological engineering evaluation of landslides in the Southeastern Bangladesh. In Proceedings of the 2015 GSA Annual Meeting, Baltimore, MD, USA, 1–4 November 2015.
- Kavzoglu, T., Sahin, E.K. and Colkesen, I., 2014. Landslide susceptibility mapping using GIS-based multi-criteria decision analysis, support vector machines, and logistic regression. *Landslides*, 11(3), pp.425-439.
- Kayastha, P., Dhital, M.R. and De Smedt, F., 2013. Evaluation of the consistency of landslide susceptibility mapping: a case study from the Kankai watershed in east Nepal. *Landslides*, 10(6), pp.785-799.
- Kelman, I., 2011. *Disaster diplomacy: how disasters affect peace and conflict*. Routledge.
- Kelman, I., 2015. Climate change and the Sendai framework for disaster risk reduction. *International Journal of Disaster Risk Science*, 6(2), pp.117-127.
- Kelman, I., Gaillard, J.C. and Mercer, J., 2015. Climate change's role in disaster risk reduction's future: Beyond vulnerability and resilience. *International Journal of Disaster Risk Science*, 6(1), pp.21-27.
- Kelman, I., Gaillard, J.C., Lewis, J. and Mercer, J., 2016. Learning from the history of disaster vulnerability and resilience research and practice for climate change. *Natural Hazards*, 82(1), pp.129-143.
- Kelman, I., Mercer, J. and Gaillard, J.C., 2012. Indigenous knowledge and disaster risk reduction. *Geography*, 97 (1), pp.12–21.
- Khan, Y.A., Lateh, H., Baten, M.A. and Kamil, A.A., 2012. Critical antecedent rainfall conditions for shallow landslides in Chittagong City of Bangladesh. *Environmental Earth Sciences*, 67(1), pp.97-106.
- Krishnamurthy, P.K., Lewis, K. and Choularton, R.J., 2014. A methodological framework for rapidly assessing the impacts of climate risk on national-level food security through a vulnerability index. *Global Environmental Change*, 25, pp.121-132.
- Krüger, F., Bankoff, G., Cannon, T., Orłowski, B. and Schipper, E.L.F. eds., 2015. *Cultures and disasters: understanding cultural framings in disaster risk reduction*. Routledge: UK.

- Kulatunga, U., 2010. Impact of culture towards disaster risk reduction. *International Journal of Strategic Property Management*, (4), pp.304-313.
- Kumar, S. 2002. *Methods for Community Participation: A Complete Guide for Practitioners*. New Delhi: Vistaar Publications.
- Lewis, J., 1984. Environmental interpretations of natural disaster mitigation: The crucial need. *The Environmentalist*, 4(3), pp.177-180.
- Lewis, J., 1999. *Development in disaster-prone places: studies of vulnerability*. London: Intermediate Technology.
- Lewis, J., 2008. The worm in the bud: Corruption, construction and catastrophe. In Boshier, L. (eds.) *Hazards and the Built Environment: Attaining Built-in Resilience*, Routledge: London, p.238–263.
- Lewis, J., 2009. An island characteristic. *Shima: The International Journal of Research into Island Cultures*, 3(1), pp.3-15.
- Lewis, J., 2011. Corruption: the hidden perpetrator of under-development and vulnerability to natural hazards and disasters: the Pat Reid lecture 2010. *JÀMBÁ: Journal of Disaster Risk Studies*, 3(2), pp.464-475.
- Lewis, J., 2012. The good, the bad and the ugly: disaster risk reduction (DRR) versus disaster risk creation (DRC). *PLoS currents*, 4.
- Lewis, J., 2013. Some realities of resilience: an updated case study of storms and flooding at Chiswell, Dorset. *Disaster Prevention and Management*, 22(4), pp.300-311.
- Liu, Y., Yin, K., Chen, L., Wang, W. and Liu, Y., 2016. A community-based disaster risk reduction system in Wanzhou, China. *International Journal of Disaster Risk Reduction*, 19, pp.379-389.
- Lowe, C.J., 2010. *Analysing vulnerability to volcanic hazards: application to St. Vincent*. Ph.D. thesis, University College London.
- Lynch, K., 1960. *The image of the city* (Vol. 11). MIT press.
- Majumder, S. 2015. *Parbatya Chattagram Jana-Samhati Samiti*. Banglapedia: National Encyclopaedia of Bangladesh. The Asiatic Society of Bangladesh. [Accessed 2 October 2016]. Available from: http://en.banglapedia.org/index.php?title=Parbatya_Chattagram_Jana-Samhati_Samiti
- Malakar, K. and Mishra, T., 2016. Assessing socio-economic vulnerability to climate change: a city-level index-based approach. *Climate and Development*, pp.1-14.

- Malczewski, J., 2004. GIS-based land-use suitability analysis: a critical overview. *Progress in planning*, 62(1), pp.3-65.
- Mallick, B. and Vogt, J., 2011. Social supremacy and its role in local level disaster mitigation planning in Bangladesh. *Disaster Prevention and Management: An International Journal*, 20(5), pp.543-556.
- Mallick, B., Ahmed, B. and Vogt, J., 2017. Living with the Risks of Cyclone Disasters in the South-Western Coastal Region of Bangladesh. *Environments*, 4(1), 13.
- Mansuri, G. and Rao, V., 2013. *Localizing development: Does participation work?*. A World Bank Policy Research Report, World Bank, Washington DC: USA. DOI: 10.1596/978-0-8213- 8256-1.
- Manyena, B., O'Brien, G., O'Keefe, P. and Rose, J., 2011. Disaster resilience: a bounce back or bounce forward ability?. *Local Environment: The International Journal of Justice and Sustainability*, 16(5), pp.417-424.
- Manyena, S.B., 2006. The concept of resilience revisited. *Disasters*, 30(4), pp.434-450.
- Martins, V.N., e Silva, D.S. and Cabral, P., 2012. Social vulnerability assessment to seismic risk using multicriteria analysis: the case study of Vila Franca do Campo (São Miguel Island, Azores, Portugal). *Natural hazards*, 62(2), pp.385-404.
- Matyas, D. and Pelling, M., 2012. Disaster vulnerability and resilience: theory, modelling and prospective. *Report produced for the Government Office of Science, Foresight project reducing risks of future disasters: priorities for decision makers. Crown copyright, London.*
- Mercer, J. and Kelman, I., 2010. Living alongside a volcano in Baliau, Papua New Guinea. *Disaster Prevention and Management: An International Journal*, 19(4), pp.412-422.
- Mercer, J., Gaillard, J.C., Crowley, K., Shannon, R., Alexander, B., Day, S. and Becker, J., 2012. Culture and disaster risk reduction: lessons and opportunities. *Environmental Hazards*, 11(2), pp.74-95.
- Mercer, J., Kelman, I., Lloyd, K. and Suchet-Pearson, S., 2008. Reflections on use of participatory research for disaster risk reduction. *Area*, 40(2), pp.172-183.

- Mercer, J., Kelman, I., Taranis, L. and Suchet-Pearson, S., 2010. Framework for integrating indigenous and scientific knowledge for disaster risk reduction. *Disasters*, 34(1), pp.214-239.
- Mercer, J., 2012. Knowledge and disaster risk reduction. *The Routledge Handbook of Hazards and Disaster Risk Reduction*. Wisner, B., Gaillard, J.C. and Kelman, I (eds), London: Routledge, pp.97-108.
- Mia, M.T., Sultana, N. and Paul, A., 2016. Studies on the Causes, Impacts and Mitigation Strategies of Landslide in Chittagong city, Bangladesh. *Journal of Environmental Science and Natural Resources*, 8(2), pp.1-5.
- MoCHTA. 2016. *CHT at a glance*. Ministry of Chittagong Hill Tracts Affairs (MoCHTA), Government of the People's Republic of Bangladesh. [Accessed 27 September 2016]. Available from: <http://www.mochta.gov.bd/>
- Mohsin, A. 1997. *The Politics of Nationalism - The Case of the Chittagong Hill Tracts Bangladesh*. Dhaka: The University Press Limited.
- Mohsin, A. 2003. *The Chittagong Hill Tracts, Bangladesh: On the Difficult Road to Peace*. Boulder, Colorado: Lynne Rienner Publishers.
- Mohsin, A. 2014. *Chittagong Hill Tracts Peace Accord, 1997*. Banglapedia: National Encyclopaedia of Bangladesh. The Asiatic Society of Bangladesh. [Accessed 2 October 2016]. Available from: [http://en.banglapedia.org/index.php?title=Chittagong_Hill_Tracts_Peace_Accord ,_1997](http://en.banglapedia.org/index.php?title=Chittagong_Hill_Tracts_Peace_Accord,_1997)
- Mugagga, F., Kakembo, V. and Buyinza, M., 2012. Land use changes on the slopes of Mount Elgon and the implications for the occurrence of landslides. *Catena*, 90, pp.39-46.
- Muminullah, M. 1978. *Geology of the Northern Part of Chittagong District, Bangladesh*. Volume 2. Government of the People's Republic of Bangladesh, Geological Survey of Bangladesh, Dhaka, Bangladesh.
- Nath, T.K., Inoue, M. and Chakma, S., 2005. Shifting cultivation (jhum) in the Chittagong Hill Tracts, Bangladesh: examining its sustainability, rural livelihood and policy implications. *International Journal of Agricultural Sustainability*, 3(2), pp.130-142.
- Notenbaert, A., Karanja, S.N., Herrero, M., Felisberto, M. and Moyo, S., 2013. Derivation of a household-level vulnerability index for empirically testing measures of adaptive capacity and vulnerability. *Regional Environmental Change*, 13(2), pp.459-470.

- O'Keefe, P., Westgate, K. and Wisner, B., 1976. Taking the naturalness out of natural disasters. *Nature*, 260, pp.566-567.
- Okpara, U.T., Stringer, L.C. and Dougill, A.J., 2017. Using a novel climate–water conflict vulnerability index to capture double exposures in Lake Chad. *Regional Environmental Change*, 17(2), pp.351-366.
- Oppenheimer, M., Campos, M., Birkmann, J., Luber, G., O'Neill, B., Takahashi, K., Warren, R., Berkhout, F., Dube, P., Foden, W. and Greiving, S., 2014. Emergent Risks and Key Vulnerabilities. In *Climate change 2014: Impacts, adaptation, and vulnerability part a: Global and sectoral aspects contribution of working group II to the fifth assessment report of the Intergovernmental Panel on Climate Change (IPCC)*, Cambridge University Press, Cambridge, United Kingdom, pp.1039-1099.
- Pandey, R. and Jha, S., 2012. Climate vulnerability index-measure of climate change vulnerability to communities: a case of rural Lower Himalaya, India. *Mitigation and Adaptation Strategies for Global Change*, 17(5), pp.487-506.
- Papathoma-Köhle, M., Neuhäuser, B., Ratzinger, K., Wenzel, H. and Dominey-Howes, D., 2007. Elements at risk as a framework for assessing the vulnerability of communities to landslides. *Natural Hazards and Earth System Science*, 7(6), pp.765-779.
- Park, S., Choi, C., Kim, B. and Kim, J., 2013. Landslide susceptibility mapping using frequency ratio, analytic hierarchy process, logistic regression, and artificial neural network methods at the Inje area, Korea. *Environmental earth sciences*, 68(5), pp.1443-1464.
- Parkins, J.R. and MacKendrick, N.A., 2007. Assessing community vulnerability: a study of the mountain pine beetle outbreak in British Columbia, Canada. *Global Environmental Change*, 17(3), pp.460-471.
- Pasteur, K. 2011. *From Vulnerability to Resilience: A framework for analysis and action to build community resilience*. Warwickshire: Practical Action Publishing Ltd.
- Paul, B.K. and Nadiruzzaman, M. 2013. Religious interpretations for the causes of the 2004 Indian Ocean tsunami. *Asian Profile*, 41(1), pp.67-77.
- Pawluszek, K. and Borkowski, A., Impact of DEM-derived factors and analytical hierarchy process on landslide susceptibility mapping in the region of Rożnów Lake, Poland. *Natural Hazards*, pp.1-34.

- Pelling, M., 2003. *The vulnerability of cities: natural disasters and social resilience*. Earthscan.
- Perotto-Baldiviezo, H.L., Thurow, T.L., Smith, C.T., Fisher, R.F. and Wu, X.B., 2004. GIS-based spatial analysis and modeling for landslide hazard assessment in steeplands, southern Honduras. *Agriculture, ecosystems & environment*, 103(1), pp.165-176.
- Persits, F.M., Wandrey, C.J., Milici, R.C., Manwar, A., 2001. *Digital Geologic and Geophysical Data of Bangladesh*. The U.S. Geological Survey Open File Report 97-470H (CD-ROM). [Accessed 18 November 2015]. Available from: <http://pubs.usgs.gov/of/1997/ofr-97-470/OF97-470H/>
- Petley, D., 2012. Global patterns of loss of life from landslides. *Geology*, 40(10), pp.927-930.
- Phillips, B.D., Fordham, M., 2009. Introduction: chapter 1. In: Phillips, B.D., Thomas, D.S.K., Fothergill, A., Blinn-Pike, L. (Eds.), *Social Vulnerability to Disasters*. CRC Press, Boca Raton, FL.
- Piya, L., Joshi, N.P. and Maharjan, K.L., 2016. Vulnerability of Chepang households to climate change and extremes in the Mid-Hills of Nepal. *Climatic Change*, 135(3-4), pp.521-537.
- Plummer, R., de Grosbois, D., Armitage, D. and de Loë, R.C., 2013. An integrative assessment of water vulnerability in First Nation communities in Southern Ontario, Canada. *Global environmental change*, 23(4), pp.749-763.
- Poudyal, C.P., Chang, C., Oh, H.J. and Lee, S., 2010. Landslide susceptibility maps comparing frequency ratio and artificial neural networks: a case study from the Nepal Himalaya. *Environmental Earth Sciences*, 61(5), pp.1049-1064.
- PROSHAR. 2014. Local wisdom: indigenous practices for mitigating disaster loss. Program for Strengthening Household Access to Resources (PROSHAR), Dhaka, Bangladesh.
- Quarantelli, E.L., 1998. *What Is a Disaster?* Routledge, New York.
- Rahman, M.S., Ahmed, B., Huq, F.F., Rahman, S., Al-Hussaini, T.M., 2016. Landslide Inventory in an Urban Setting in the Context of Chittagong Metropolitan Area, Bangladesh. Paper Id: 36 (pp. 170-178), 3rd International Conference on Advances in Civil Engineering 2016 (ICACE 2016), Chittagong University of Engineering and Technology (CUET), Chittagong, Bangladesh.

- Ramani, S.E., Pitchaimani, K. and Gnanamanickam, V.R., 2011. GIS based landslide susceptibility mapping of Tevankarai Ar sub-watershed, Kodaikkanal, India using binary logistic regression analysis. *Journal of Mountain Science*, 8(4), pp.505-517.
- Rashid, M. and Bashir, M.T., 2010. *Urban Microfinance in Bangladesh*. Institute of Microfinance (InM), Dhaka, Bangladesh.
- Rasul, G., 2007. Political ecology of the degradation of forest commons in the Chittagong Hill Tracts of Bangladesh. *Environmental Conservation*, 34(2), pp.153-163.
- Reis, S., Yalcin, A., Atasoy, M., Nisanci, R., Bayrak, T., Erduran, M., Sancar, C. and Ekercin, S., 2012. Remote sensing and GIS-based landslide susceptibility mapping using frequency ratio and analytical hierarchy methods in Rize province (NE Turkey). *Environmental Earth Sciences*, 66(7), pp.2063-2073.
- ReliefWeb, 2016. *China: Floods and Landslides - June 2016*. [Accessed 20 November 2016]. Available from: <http://reliefweb.int/disaster/fl-2016-000044-chn>
- Roy, R.C.K. 2000. *Land Rights of the Indigenous Peoples of the Chittagong Hill Tracts, Bangladesh*. IWGIA Document No. 99. The International Work Group for Indigenous Affairs (IWGIA), Copenhagen, Denmark.
- Saaty, T.L., 1977. A scaling method for priorities in hierarchical structures. *Journal of mathematical psychology*, 15(3), pp.234-281.
- Saaty, T.L., 2008. Decision making with the analytic hierarchy process. *International journal of services sciences*, 1(1), pp.83-98.
- San, B.T., 2014. An evaluation of SVM using polygon-based random sampling in landslide susceptibility mapping: the Candir catchment area (western Antalya, Turkey). *International Journal of Applied Earth Observation and Geoinformation*, 26, pp.399-412.
- Sarker, A. A., & Rashid, A. M. (2013). Landslide and Flashflood in Bangladesh. In *Disaster Risk Reduction Approaches in Bangladesh* (pp. 165-189). Springer Japan.
- Schneiderbauer, S. and Ehrlich, D., 2006. Social levels and hazard (in)dependence in determining vulnerability. Chapter 3 in J. Birkmann (ed.) *Measuring vulnerability to natural hazards: Towards disaster resilient societies*. United Nations University Press, Tokyo, Japan: 78-102 pp.

- Sen, A. (1981). *Poverty and Famines: An Essay on Entitlements and Deprivation*. Oxford: Clarendon.
- Sendai Framework for Disaster Risk Reduction 2015-2030. 2015. The United Nations Office for Disaster Risk Reduction (UNISDR), Geneva, Switzerland.
- Shah, K.U., Dulal, H.B., Johnson, C. and Baptiste, A., 2013. Understanding livelihood vulnerability to climate change: Applying the livelihood vulnerability index in Trinidad and Tobago. *Geoforum*, 47, pp.125-137.
- Shahabi, H. & Hashim, M. 2015. Landslide susceptibility mapping using GIS-based statistical models and Remote sensing data in tropical environment. *Scientific Reports*. 5: 9899.
- Shaw, R., 2012. Chapter 1 Overview of Community-Based Disaster Risk Reduction. In *Community-based disaster risk reduction* (pp. 3-17). Emerald Group Publishing Limited.
- Shaw, R., Uy, N. and Baumwoll, J., 2008. *Indigenous knowledge for disaster risk reduction: Good practices and lessons learned from experiences in the Asia-Pacific Region*. United Nations International Strategy for Disaster Reduction (UNISDR), Bangkok: Thailand.
- Shrestha, F., Uddin, K., Maharjan, S.B. and Bajracharya, S.R., 2016. Application of remote sensing and GIS in environmental monitoring in the Hindu Kush Himalayan region. *AIMS Environmental Science*, 3(4): 646-662.
- Skovdal, M., and Cornish, F., 2015. *Qualitative Research for Development*, Rugby, UK: Practical Action Publishing. [Accessed 17 January 2016]. Available from: <http://dx.doi.org/10.3362/9781780448534>
- Steckler, M.S., Mondal, D.R., Akhter, S.H., Seeber, L., Feng, L., Gale, J., Hill, E.M. and Howe, M. (2016). Locked and loading megathrust linked to active subduction beneath the Indo-Burman Ranges. *Nature Geoscience*, 9(8), 615-618.
- Stephens, N.M., Fryberg, S.A., Markus, H.R. and Hamedani, M.G., 2013. Who explains Hurricane Katrina and the Chilean Earthquake as an act of God? The experience of extreme hardship predicts religious meaning-making. *Journal of Cross-Cultural Psychology*, 44(4), pp.606-619.
- Stoffel, M. and Huggel, C., 2012. Effects of climate change on mass movements in mountain environments. *Progress in Physical Geography*, 36(3), pp.421-439.

- Sudmeier-Rieux, K.I., 2014. Resilience—an emerging paradigm of danger or of hope?. *Disaster Prevention and Management*, 23(1), pp.67-80.
- Syafwina. 2014. Recognizing Indigenous Knowledge for Disaster Management: Smong, Early Warning System from Simeulue Island, Aceh. The 4th International Conference on Sustainable Future for Human Security, Sustain 2013. *Procedia Environmental Sciences* 20, 573 – 582.
- Tachikawa T, Hato M, Kaku M, Iwasaki A (2011) The characteristics of ASTER GDEM version 2, IGARSS. [Accessed 23 October 2015]. Available from: <http://www.jspacesystems.or.jp/ersdac/GDEM/E/1.html>
- Tate, E., 2012. Social vulnerability indices: a comparative assessment using uncertainty and sensitivity analysis. *Natural Hazards*, 63(2), pp.325-347.
- The Imperial Gazetteer of India. 1908. *Central Provinces to Coompta*. Vol. X (descriptive). New edition, the Clarendon Press, Oxford, UK. [(Accessed 27 September 2016)]. Available from: http://dsal.uchicago.edu/reference/gazetteer/pager.html?volume=10&objectid=DS405.1.I34_V10_001.gif
- Thomas L.. Saaty, 1980. *The analytic hierarchy process: planning, priority setting, resource allocation*. McGraw-Hill International Book Company.
- Tobin, G.A., 1999. Sustainability and community resilience: the holy grail of hazards planning?. *Global Environmental Change Part B: Environmental Hazards*, 1(1), pp.13-25.
- Tracy, S.J., 2010. Qualitative quality: Eight “big-tent” criteria for excellent qualitative research. *Qualitative inquiry*, 16(10), pp.837-851.
- Turner, B.L., Kasperson, R.E., Matson, P.A., McCarthy, J.J., Corell, R.W., Christensen, L., Eckley, N., Kasperson, J.X., Luers, A., Martello, M.L. and Polsky, C., 2003. A framework for vulnerability analysis in sustainability science. *Proceedings of the national academy of sciences*, 100(14), pp.8074-8079.
- Twigg, J. 2009. *Characteristics of a disaster-resilient community: a guidance note* (version 2). DFID Disaster Risk Reduction NGO Interagency Group: Teddington, UK.
- Uddin K. 2013. *Image classification: hands on exercise using eCognition*. eCognition Community, Trimble Geospatial Imaging, Munich, Germany.
- Uddin, K., Chaudhary, S., Chettri, N., Kotru, R., Murthy, M., Chaudhary, R.P., Ning, W., Shrestha, S.M. and Gautam, S.K., 2015. The changing land cover

- and fragmenting forest on the Roof of the World: A case study in Nepal's Kailash Sacred Landscape. *Landscape and Urban Planning*, 141, pp.1-10.
- UNISDR [United Nations Office for Disaster Risk Reduction] / CRED [Centre for Research on the Epidemiology of Disasters]. (2016). *2015 disasters in numbers*. [Accessed 13 February 2017]. Available from: <https://www.unisdr.org/we/inform/publications/47804>
- UNISDR. 2008. *Indigenous Knowledge for Disaster Risk Reduction: Good Practices and Lessons Learned from Experiences in the Asia-Pacific Region*. United Nations Inter-Agency Secretariat of the International Strategy for Disaster Reduction (UNISDR), Secretariat Asia and the Pacific, Bangkok, Thailand.
- United Nations (UN), 2014. *World Urbanization Prospects: The 2014 Revision*. Department of Economic and Social Affairs, Population Division. [Accessed 23 June 2016]. Available from: <https://esa.un.org/unpd/wup/>
- United Nations (UN). 2008. *The United Nations Declaration on the Rights of Indigenous Peoples (UNDRIP)*. [Accessed 18 April 2017]. Available from: <https://www.un.org/development/desa/indigenouspeoples/declaration-on-the-rights-of-indigenous-peoples.html>
- United Nations (UN). 2015. *Transforming our world: the 2030 Agenda for Sustainable Development*. [Accessed 18 January 2017]. Available from: <http://www.un.org/sustainabledevelopment/>
- United Nations (UN). 2017. *Least developed countries (LDCs)*. [Accessed 19 April 2017]. Available from: <https://www.un.org/development/desa/dpad/least-developed-country-category.html>
- United Nations Development Programme (UNDP). 2000. *UNDP and Indigenous Peoples: A Practice Note on Engagement*. New York, USA.
- United Nations Educational, Scientific and Cultural Organization (UNESCO). 2015. *Resilience in a time of uncertainty: Indigenous peoples and climate change*. International Conference co-organised by UNESCO and the National Museum of Natural History of France, in partnership with Tebtebba from 26 - 27 November 2015, Paris, France. [Accessed 2 April 2017]. Available from: <http://www.indigenous2015.org/>
- United Nations Educational, Scientific and Cultural Organization (UNESCO). 2017. *What is meant by "cultural heritage"?* UNESCO, Paris, France. [Accessed 7 April 2017]. Available from:

- <http://www.unesco.org/new/en/culture/themes/illicit-trafficking-of-cultural-property/unesco-database-of-national-cultural-heritage-laws/frequently-asked-questions/definition-of-the-cultural-heritage/>
- United Nations Framework Convention on Climate Change (UNFCCC). 2016. *The Paris Agreement*. Bonn, Germany. [Accessed 20 April 2017]. Available from: http://unfccc.int/paris_agreement/items/9485.php
- United Nations Office for Disaster Risk Reduction (UNISDR). 2017. *Terminology on disaster risk reduction*. [Accessed 14 March 2017]. Available from <https://www.unisdr.org/we/inform/terminology>
- United Nations University - Institute for Environment and Human Security (UNU-EHS). 2016. *World Risk Report 2016*. Bonn, Germany.
- USGS. 2014. *Frequently Asked Questions about the Landsat Missions*. Department of the Interior, U.S. Geological Survey (USGS). [Accessed 13 February 2015]. Available from: http://landsat.usgs.gov/band_designations_landsat_satellites.php
- USGS. 2015. USGS Global Visualization Viewer. Department of the Interior, U.S. Geological Survey (USGS). [Accessed 10 February 2015]. Available from: <http://glovis.usgs.gov/index.shtml>
- van Westen, C. J., Alkema, D., Damen, M. C. J., Kerle, N. and Kingma, N. C. 2011. *Multi-Hazard Risk Assessment: Distance Education Course, Guide Book*. United Nations University – ITC School on Disaster Geo- information Management.
- Van Westen, C.J., Rengers, N. and Soeters, R., 2003. Use of geomorphological information in indirect landslide susceptibility assessment. *Natural hazards*, 30(3), pp.399-419.
- Villagrán de León, J.C. 2006. Vulnerability assessment: the sectoral approach. In: Birkmann, J. ed. *Measuring vulnerability to natural hazards: Towards disaster resilient societies*. New Delhi: TERI Press, pp.300-315.
- Vincent, K., 2004. *Creating an index of social vulnerability to climate change for Africa*. Tyndall Center for Climate Change Research. Working Paper, 56.
- Vincent, K., 2007. Uncertainty in adaptive capacity and the importance of scale. *Global Environmental Change*, 17(1), pp.12-24.
- Walmsley, J., 2006. Putting community in place [The nature of community.]. *Dialogue (Academy of the Social Sciences in Australia)*, 25(1), p.5.

- Walshe, R.A. and Nunn, P.D., 2012. Integration of indigenous knowledge and disaster risk reduction: A case study from Baie Martelli, Pentecost Island, Vanuatu. *International Journal of Disaster Risk Science*, 3(4), pp.185-194.
- Watts, M.J. and Bohle, H.G., 1993. The space of vulnerability: the causal structure of hunger and famine. *Progress in human geography*, 17(1), pp.43-67.
- Whitaker, R., 2007. Criticisms of the Analytic Hierarchy Process: Why they often make no sense. *Mathematical and Computer Modelling*, 46(7), pp.948-961.
- White, G.F., 1942. *Human adjustment to floods: a geographical approach to the flood problem in the United States*. Ph.D. Dissertation. University of Chicago.
- Wijkman, A. and Timberlake, L., 1984. *Natural Disasters: Acts of God or Acts of Man?*. Earthscan, 1717 Massachusetts Ave., NW, Washington, DC 20036.
- Wisner, B. 2006. Self-assessment of coping capacity: Participatory, proactive and qualitative engagement of communities in their own risk management. In: Birkmann, J. ed. *Measuring vulnerability to natural hazards: Towards disaster resilient societies*. New Delhi: TERI Press, pp.316-328.
- Wisner, B. and Luce, H.R., 1993. Disaster vulnerability: scale, power and daily life. *GeoJournal*, 30(2), pp.127-140.
- Wisner, B., Blaikie, P., Cannon, T. & Davis, I., 2004, *At risk: Natural hazards, people's vulnerability and disasters*. Oxon: Routledge.
- World Bank. 2012. *World Bank Statement on Padma Bridge*. Washington, USA. [Accessed 3 April 2017]. Available from: <http://www.worldbank.org/en/news/press-release/2012/06/29/world-bank-statement-padma-bridge>
- World Bank. 2017. *World Bank Open Data*. [Accessed 19 April 2017]. Available from: <http://data.worldbank.org/>
- World Disasters Report 2015. *Focus on local actors, the key to humanitarian effectiveness*. International Federation of Red Cross and Red Crescent Societies (IFRC), Geneva, Switzerland.
- World Economic Forum. 2016. *The Global Risks Report 2016*, (11th Edition, REF: 080116). Geneva, Switzerland.
- World Risk Report. 2016. Bündnis Entwicklung Hilft (Alliance Development Works), and United Nations University – Institute for Environment and Human Security (UNU-EHS), Germany.

- Yadav, D.K. and Barve, A., 2017. Analysis of socioeconomic vulnerability for cyclone-affected communities in coastal Odisha, India. *International Journal of Disaster Risk Reduction*, 22, pp.387-396.
- Yang, X. and Chen, L., 2010. Using multi-temporal remote sensor imagery to detect earthquake-triggered landslides. *International Journal of Applied Earth Observation and Geoinformation*, 12(6), pp.487-495.
- Yasmin, L., 2014. The Tyranny of the Majority in Bangladesh: The Case of the Chittagong Hill Tracts. *Nationalism and Ethnic Politics*, 20(1), pp.116-132.
- Yilmaz, C., Topal, T. and Süzen, M.L., 2012. GIS-based landslide susceptibility mapping using bivariate statistical analysis in Devrek (Zonguldak-Turkey). *Environmental earth sciences*, 65(7), pp.2161-2178.
- Yoon, D.K., 2012. Assessment of social vulnerability to natural disasters: a comparative study. *Natural Hazards*, 63(2), pp.823-843.
- Youlin, Y., Jin, L.S., Squires, V., Kyung-soo, K and Hye-min, P. 2011. *Combating Desertification & Land Degradation: Proven Practices from Asia and the Pacific*. The Korea Forest Service (KFS) and United Nations Convention to Combat Desertification (UNCCD), Daejeon City, Republic of Korea.
- Yunus, M. 2003. *Banker To The Poor: Micro-Lending and the Battle Against World Poverty*. Public Affairs: New York, USA.
- Zhang, J., Gurung, D.R., Liu, R., Murthy, M.S.R. and Su, F., 2015. Abe Barek landslide and landslide susceptibility assessment in Badakhshan Province, Afghanistan. *Landslides*, 12(3), pp.597-609.
- Zhang, X., Yang, F. 2004. *RClimDex (1.0): User Manual*. [Software]. Climate Research Branch, Environment Canada, Downsview, Ontario, Canada.

The full text is not uploaded due to copyright reasons. The hard copy is available at the UCL Library. The complete PhD thesis in PDF file will be uploaded in ResearchGate in September 2019. Please email me [bayes.ahmed@ucl.ac.uk] for further queries.